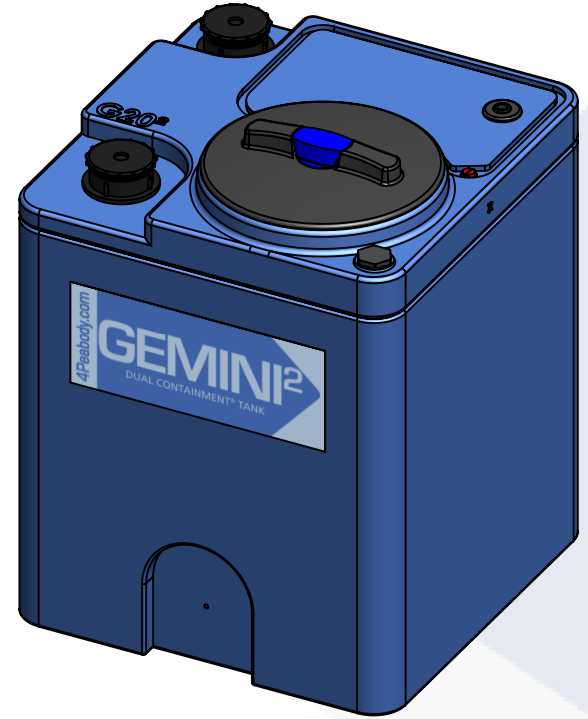
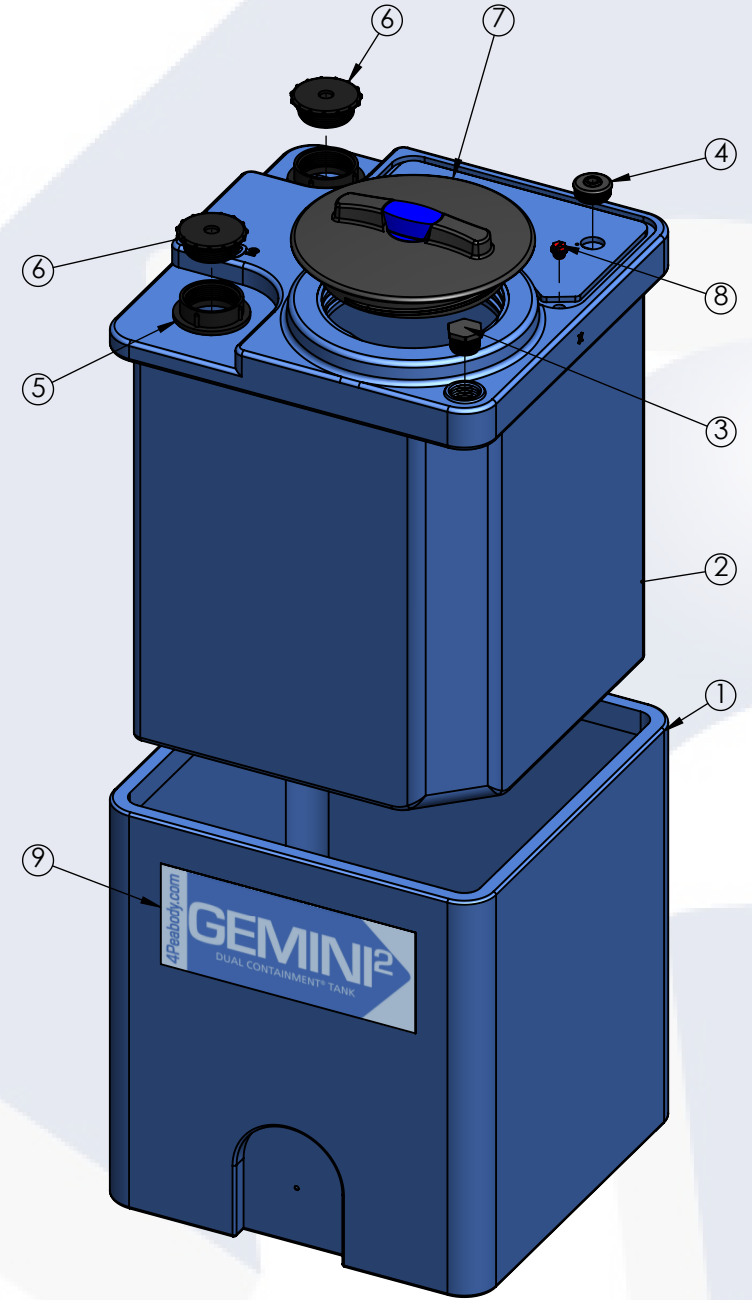


20 GALLON GEMINI <sup>2</sup>	PART NUMBER	
	BLUE	NATURAL
LPE (1.5)	01-29333	01-29371
LPE (1.9)	01-30052	01-30056
XLPE (1.5)	N/A	01-30147
XLPE (1.9)	N/A	01-30152



**ISOMETRIC VIEW  
(ASSEMBLED)**



**ISOMETRIC VIEW  
(EXPLODED)**


TOP LEVEL ASSEMBLY		
ITEM NO.	DESCRIPTION	QTY.
1	20G GEMINI <sup>2</sup> , SECONDARY TANK	1
2	GEMINI <sup>2</sup> , 20G PRIMARY TANK	1
3	Ø1" PLUG, MPT, PE, BLACK	1
4	Ø1-5/8" CAPLUG / GROMMET ASSY	1
5	Ø2" FNPT SPIN WELD FITTING, PE	2
6	Ø2" MPT PLUG, PE, BLACK	2
7	Ø10" OD / Ø8" ID TWIST LID ASSY	1
8	RED CAPLUG / O-RING SUB-ASSY	1
9	GEMINI <sup>2</sup> MOLD IN LOGO	1

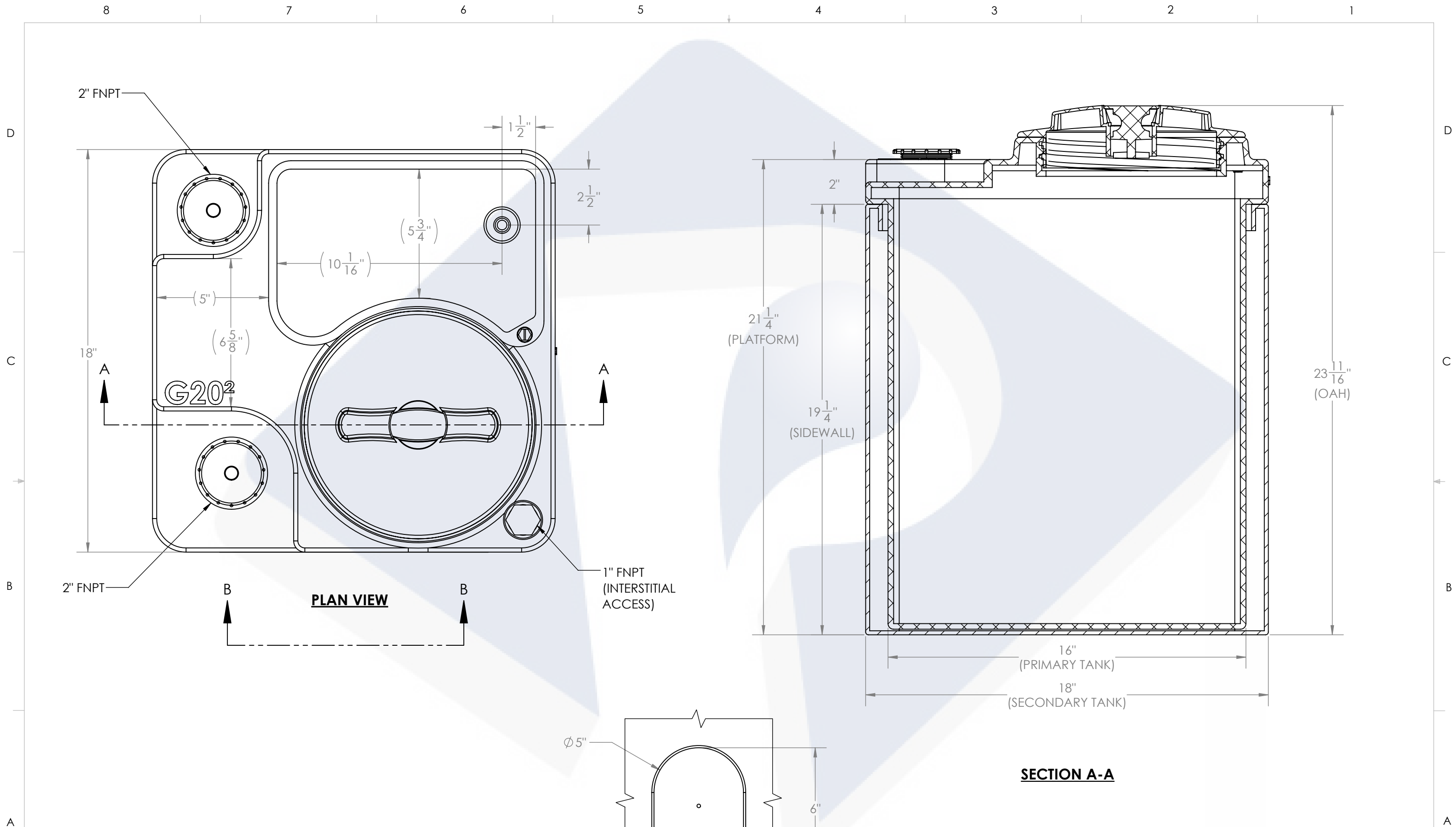
ALTERNATE CONFIGURATION TO MEET  
NSF/ANSI STANDARD 61 AVAILABLE

- NOTES:  
 1. CAPACITY: 20 GAL. NOMINAL  
 2. SERVICE PRESSURE: ATMOSPHERIC



**PROPRIETARY AND CONFIDENTIAL**  
 THE INFORMATION CONTAINED IN THIS DRAWING IS THE SOLE PROPERTY OF PEABODY ENGINEERING. ANY REPRODUCTION IN PART OR AS A WHOLE WITHOUT THE WRITTEN PERMISSION OF PEABODY ENGINEERING IS PROHIBITED.

UNLESS OTHERWISE SPECIFIED:		NAME	DATE	 PROJECT: <b>GEMINI<sup>2</sup> DUAL CONTAINMENT TANKS</b> CUSTOMER: <b>PEABODY STANDARD</b> SITE/LOCATION: <b>FOB: CORONA, CA</b> SALES ORDER: <b>HPTC-29371DC-PB</b>
DIMENSIONS ARE IN INCHES TOLERANCES: ±1/4" ANGULAR: ±.5° ONE PLACE DECIMAL: ±.25 TWO PLACE DECIMAL: ±.125 THREE PLACE DECIMAL: ±.063		DRAWN	RFR 02/26/18	
TANK MATERIAL:	LPE	CHECKED		SIZE: <b>B</b> DESC. <b>20 GALLON GEMINI<sup>2</sup> TANK, 18" x 18" x 24"</b> REV. <b>E</b>
INNER TANK S/N:		ENG APPR.		
OUTER TANK S/N:		MFG APPR.		SCALE: 1:8
CUSTOMER PO#		Q.A.		SHEET 1 OF 2
DO NOT SCALE DRAWING		ALTERNATIVE VERSIONS MATERIALS: XLPE, PPL, PVDF COLORS: NATURAL, BLUE OR BLACK AVAILABLE WITH FRP WRAP CALL FOR PART NUMBERS		



PROJECT:  
20G Gemini<sup>2</sup> (NEW TOP), CUSTOMER Print

SCALE: 1:4    REV. E    SHEET 2 OF 2