

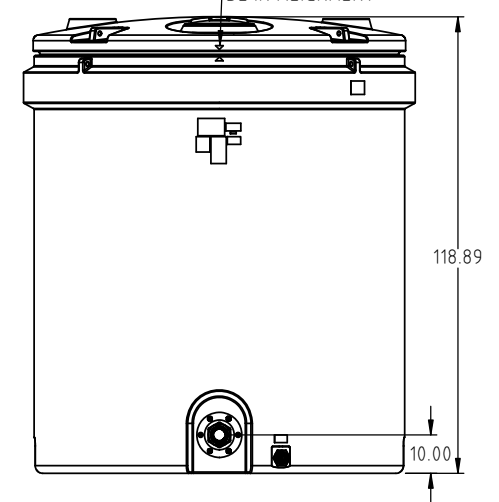
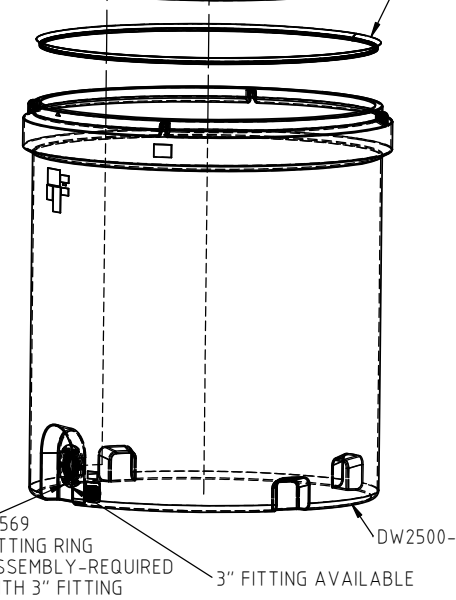
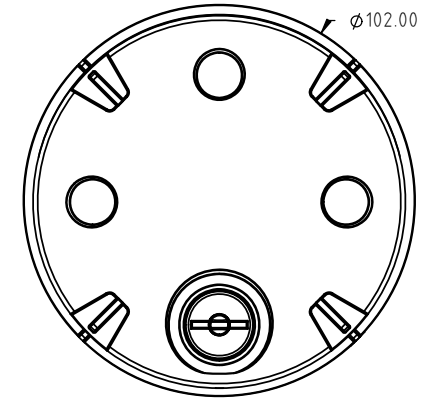
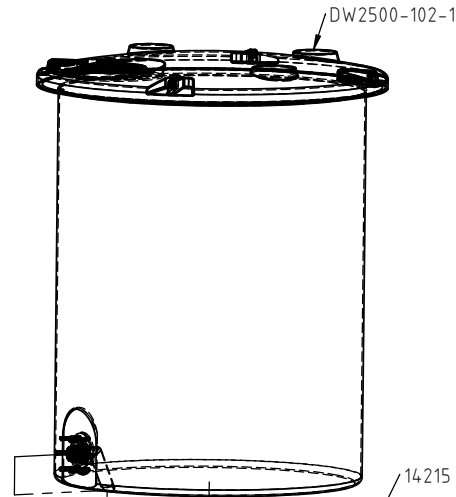
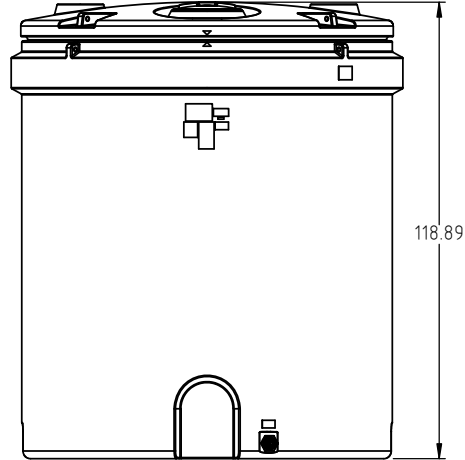
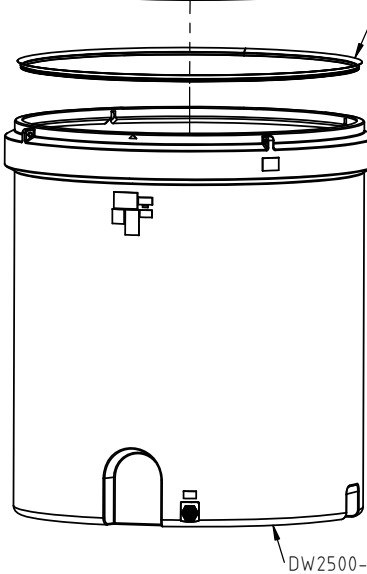
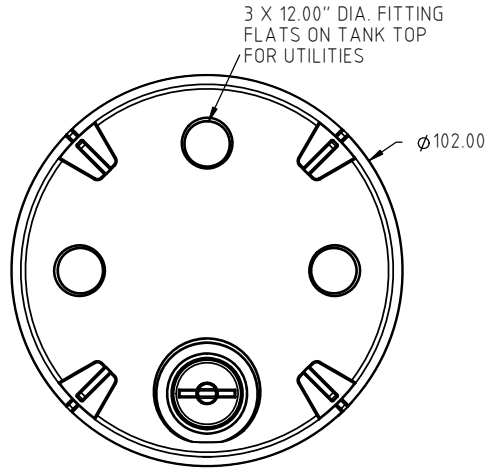
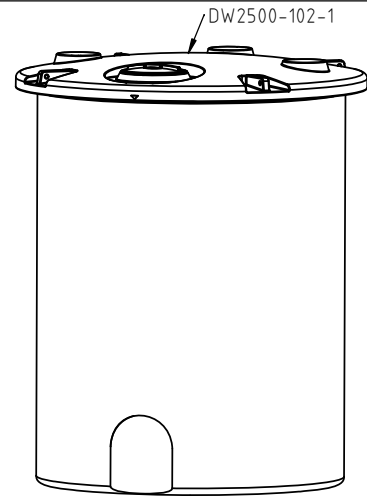
© DEN HARTOG INDUSTRIES, INC.

Copyright. All information furnished within this document, electronic file or design correspondence is the property of Den Hartog Industries, Inc. and shall not be used, disclosed to others or copied without the expressed written consent of Den Hartog Industries, Inc.


STANDARD TANK ASSEMBLY

TANK ASSEMBLY WITH OPTIONAL FITTING

DW2500-102



REV	DESCRIPTION	BY / DATE	CCN	DRAWN / DATE ADH 10/3/14	MATERIAL SEE NOTE 1
				APPRD. / DATE REH 9/22/15	
	ALL DIMENSIONS ARE IN DECIMAL INCHES TOLERANCES UNLESS OTHERWISE SPECIFIED	THIRD ANGLE PROJECTION ANSI 14.5M	SHOT WEIGHT:	NOTES:	
	POLYETHYLENE		SHIPPING WEIGHT: STANDARD 1153 LBS.	1.) REFERENCE COMPONENT PRINTS FOR DETAILS	
	±1% @ 68°F		FINISH:	2.) PATENT 9,162,816	

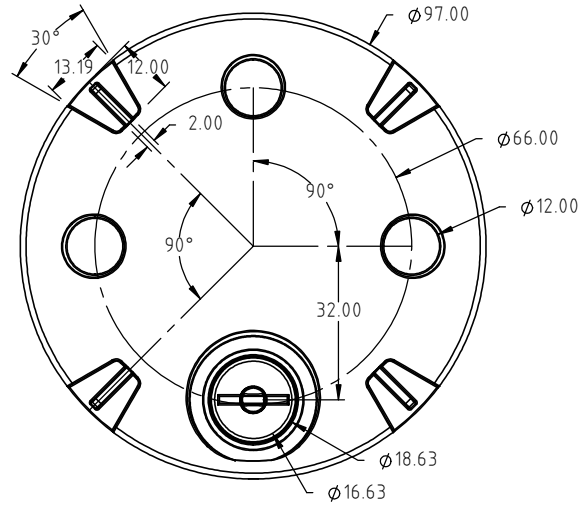
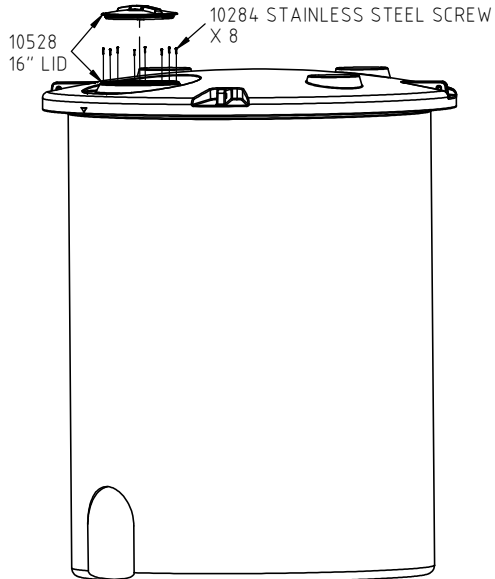


**Heritage Products** (866) 839-1866  
Sales@heritagepro.com

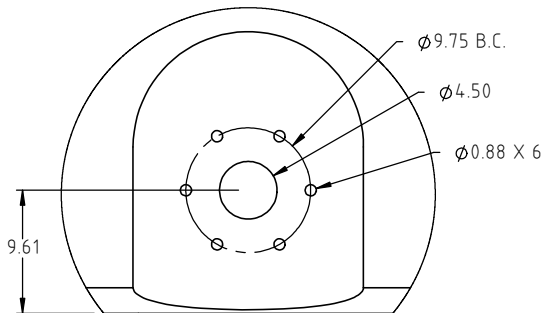
4010 HOSPERS DRIVE S. BOX 425, HOSPERS, IOWA 51238-0425

DESCRIPTION	2500 GALLON DUAL LINE™ TANK ASSEMBLY	
SCALE	N.S.	PART NO. DW2500-102

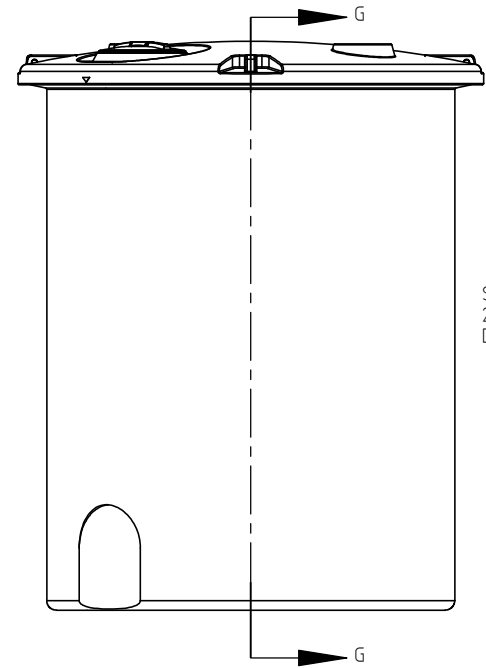
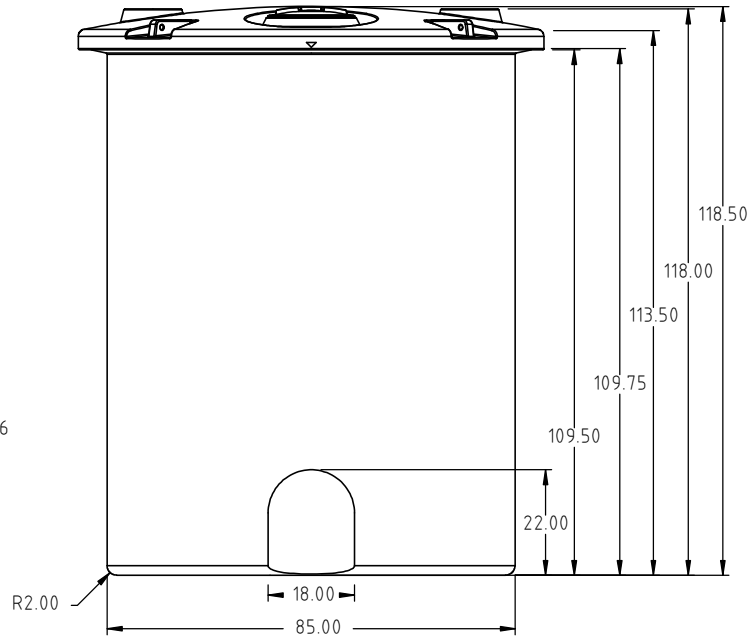
Copyright. All information furnished within this document, electronic file or design correspondence is the property of Den Hartog Industries, Inc. and shall not be used, disclosed to others or copied without the expressed written consent of Den Hartog Industries, Inc.



FITTING OPTIONAL



DETAIL A  
SCALE 1:15



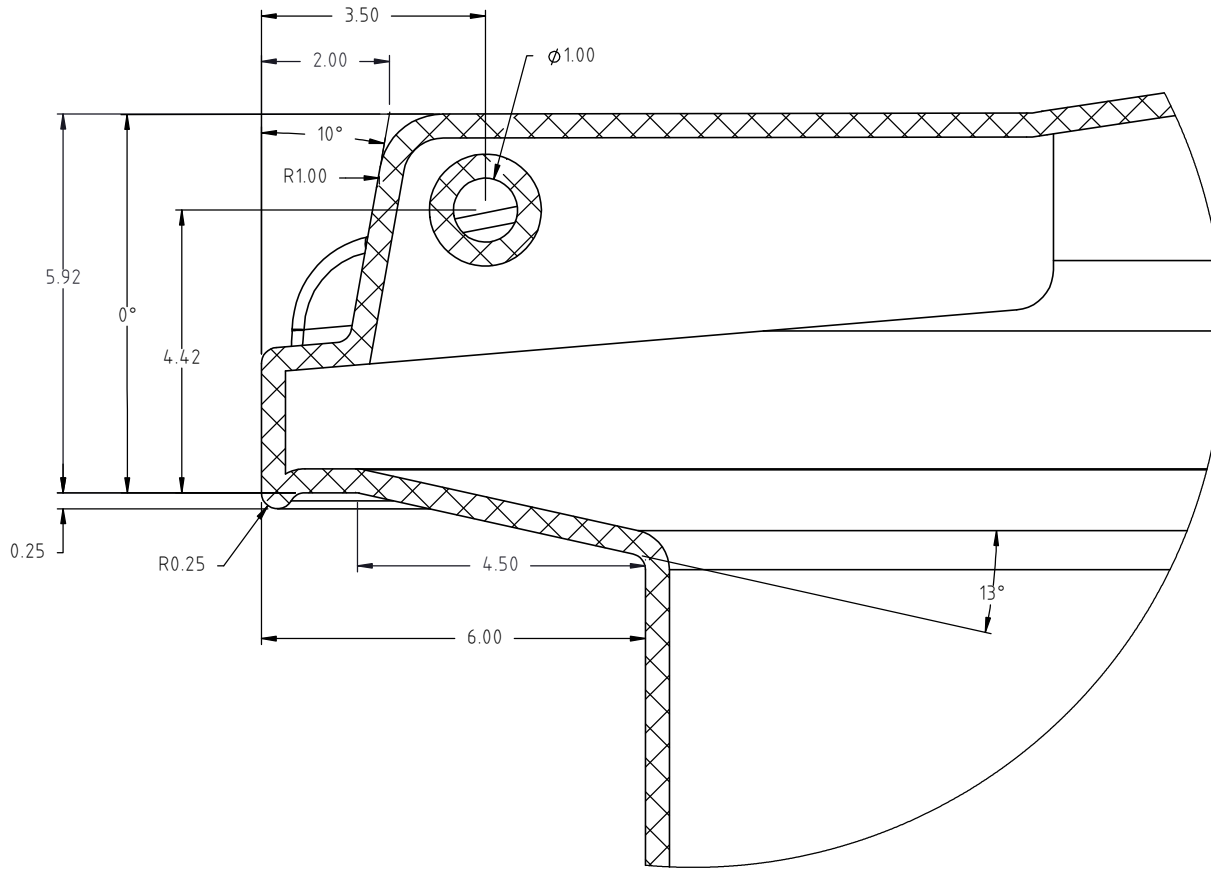
SEE SHEET  
2 OF 2 FOR  
DETAILS

REV	DESCRIPTION	BY / DATE	CCN	DRAWN / DATE ADH 10/16/12	MATERIAL 10420
				APPROD. / DATE REH 9/21/15	
				SHOT WEIGHT: 582 LB.	NOTES: 1.) 0.38 NOM. WALL THICKNESS 2.) PATENT 9,162,816
				SHIPPING WEIGHT: 584 LB.	
ALL DIMENSIONS ARE IN DECIMAL INCHES TOLERANCES UNLESS OTHERWISE SPECIFIED		THIRD ANGLE PROJECTION ANSI 14.5M		FINISH:	
POLYETHYLENE $\pm 1\%$ @ 68°F					
METAL DECIMAL $\pm .125$ " FRACTION $\pm 1/4$ " ANGLE $\pm 1^\circ$					

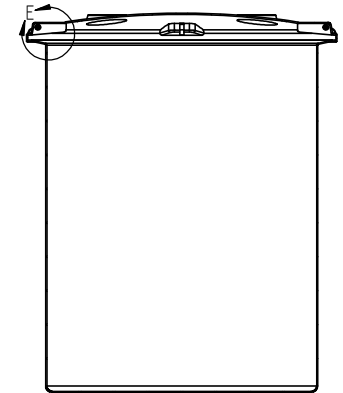


4010 HOSPERS DRIVE S. BOX 425, HOSPERS, IOWA 51238-0425


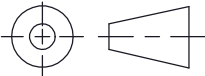
DESCRIPTION 2500 GALLON DUAL LINE™ TANK-INNER TANK-1 OF 2	
SCALE N.S.	PART NO. DW2500-102-1



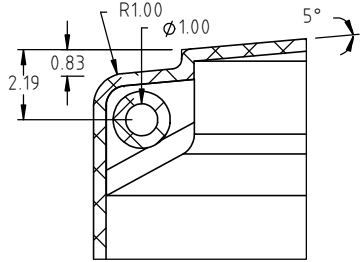
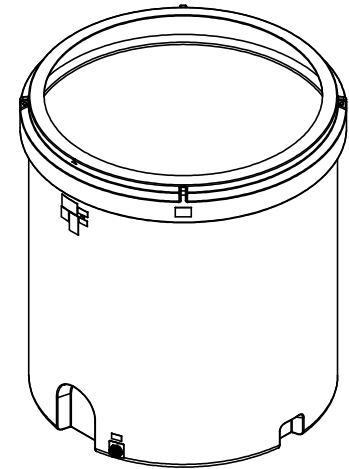
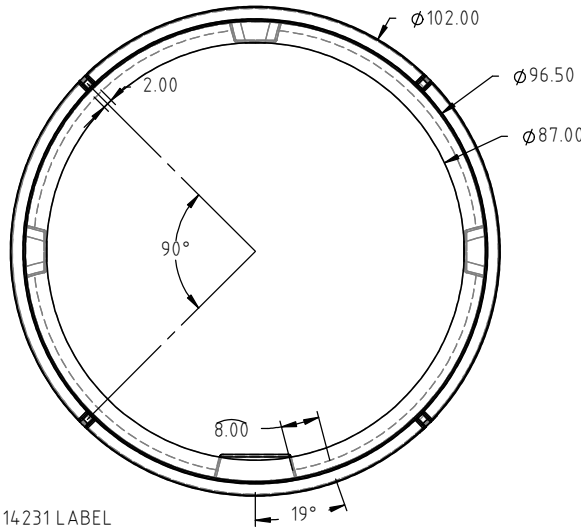
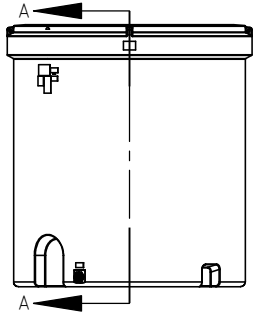
DETAIL E  
SCALE 1 : 3



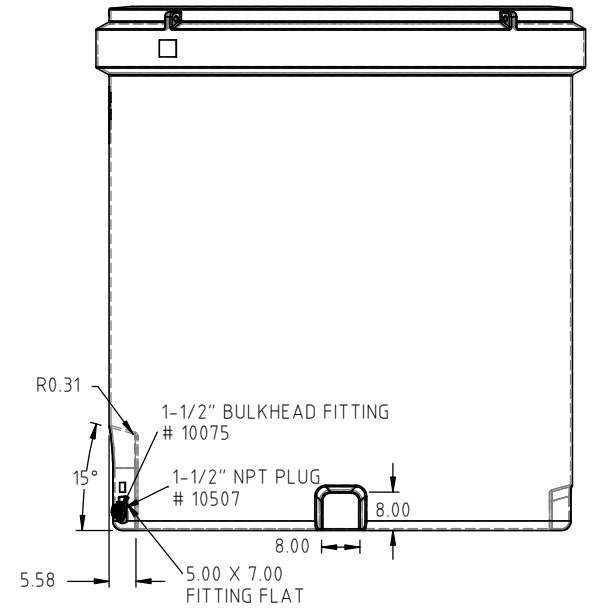
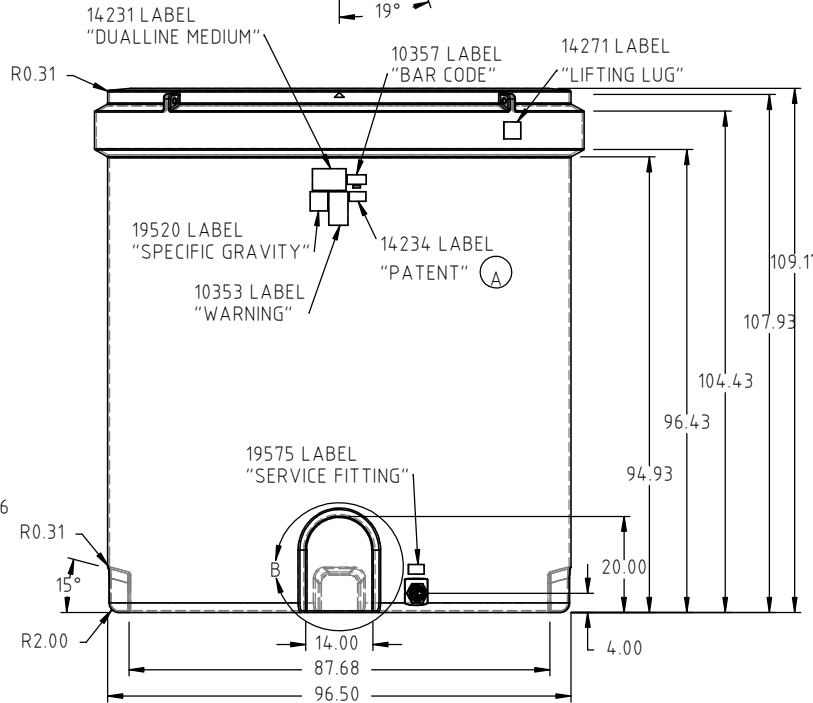
SECTION D-D  
SCALE 1 : 60

				DRAWN / DATE ADH 10/16/12		MATERIAL			
				APPROD. / DATE REH 9/21/15					
REV	DESCRIPTION	BY / DATE	CCN	SHOT WEIGHT:		 4010 HOSPERS DRIVE S. BOX 425, HOSPERS, IOWA 51238-0425			
ALL DIMENSIONS ARE IN DECIMAL INCHES TOLERANCES UNLESS OTHERWISE SPECIFIED				THIRD ANGLE PROJECTION ANSI 14.5M				NOTES:	
POLYETHYLENE ±1% @ 68°F								DESCRIPTION 2500 GALLON DUAL LINE™ TANK-INNER TANK- 2 OF 2	
METAL DECIMAL ± .125" FRACTION ± 1/4" ANGLE ± 1°				SHIPPING WEIGHT:		SCALE N.S.	PART NO.		

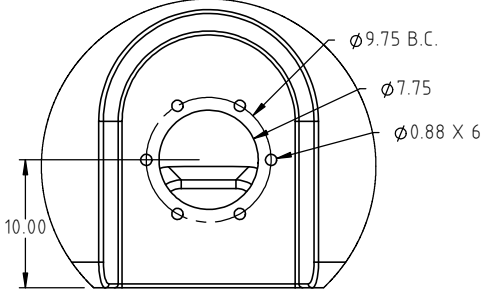
Copyright. All information furnished within this document, electronic file or design correspondence is the property of Den Hartog industries, Inc. and shall not be used, disclosed to others or copied without the expressed written consent of Den Hartog Industries, Inc.



SECTION A-A  
SCALE 1: 6



FITTING OPTIONAL



DETAIL B  
SCALE 1:15

				DRAWN / DATE ADH 2/18/14	MATERIAL 10420
A	"PATENT" WAS "PATENT PENDING"	ADH 4/21/16	3242	APPRO. / DATE REH 9/21/15	
REV	DESCRIPTION	BY / DATE	CCN		
ALL DIMENSIONS ARE IN DECIMAL INCHES TOLERANCES UNLESS OTHERWISE SPECIFIED		THIRD ANGLE PROJECTION ANSI 14.5M		SHOT WEIGHT: 649 LB.	NOTES: 1.) 0.39 NOM. WALL THICKNESS 2.) PATENT 9,162,816
POLYETHYLENE		METAL DECIMAL ± .125" FRACTION ± 1/4" ANGLE ± 1°		SHIPPING WEIGHT: 559 LB.	
±1% @ 68°F				FINISH:	



4010 HOSPERS DRIVE S. BOX 425, HOSPERS, IOWA 51238-0425

DESCRIPTION 2500 GALLON DUAL LINE™ TANK- OUTER TANK	
SCALE N.S.	PART NO. DW2500-102-2

**DW2500-102 DOUBLE WALL TANK  
STANDARD COMPONENTS**

