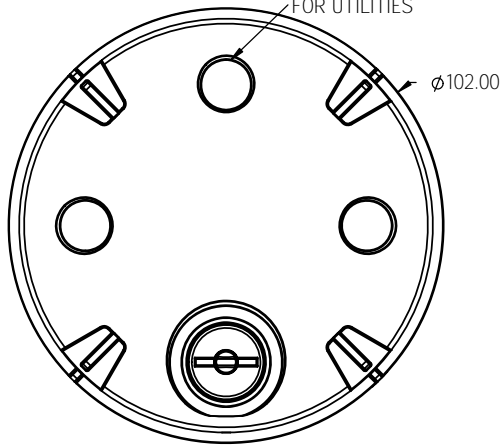
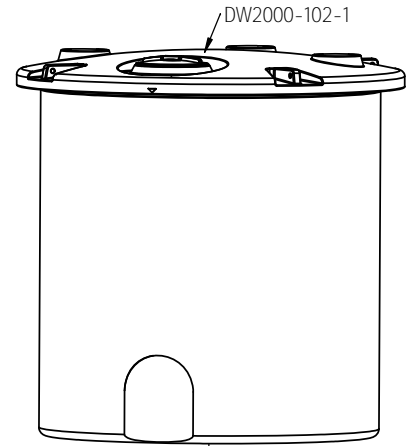


© DEN HARTOG INDUSTRIES, INC.

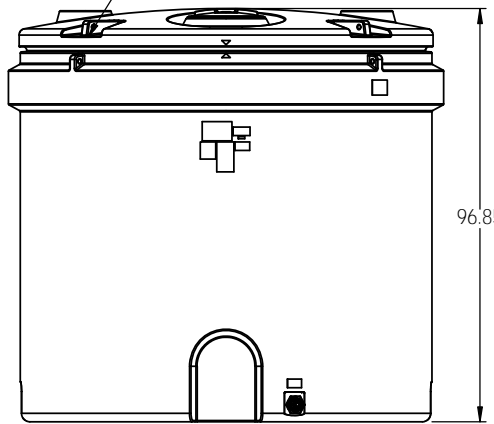
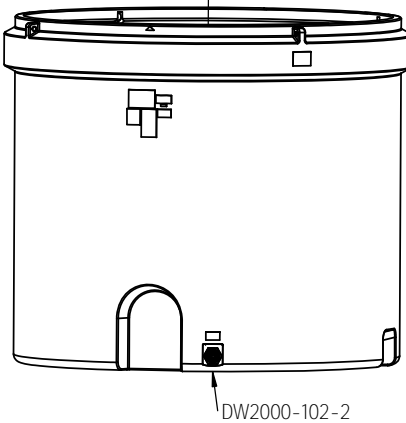
Copyright. All information furnished within this document, electronic file or design correspondence is the property of Den Hartog Industries, Inc. and shall not be used, disclosed to others or copied without the expressed written consent of Den Hartog Industries, Inc.

STANDARD CONFIGURATION



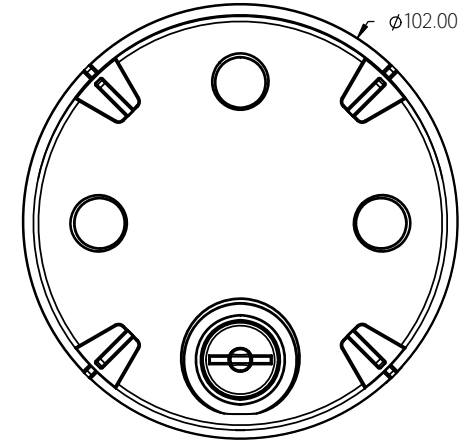
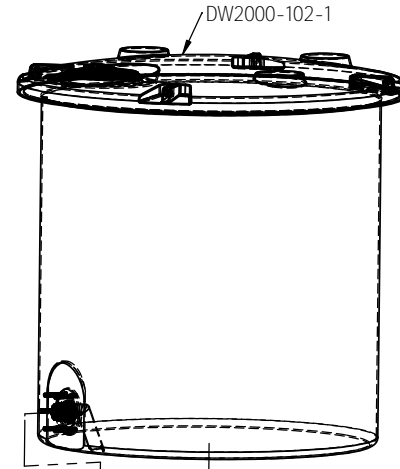
14215-TANK SEAL

IMPORTANT  
CONNECT ALL FOUR ADJOINING  
LIFT LUGS TOGETHER FOR SHIPMENT



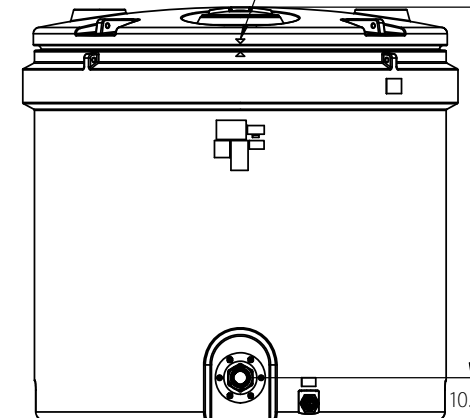
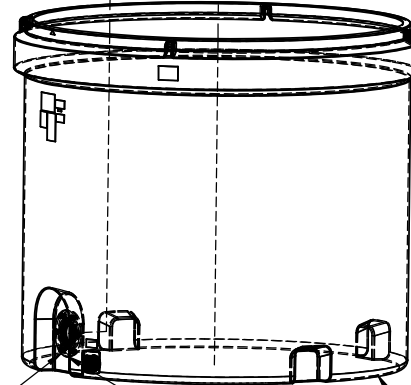
TANK ASSEMBLY WITH OPTIONAL FITTING

DW2000-102



14215 TANK SEAL

NOTE: MARKS MUST  
BE IN ALIGNMENT



19569  
FITTING RING  
ASSEMBLY-REQUIRED  
WITH 3" FITTING

3" FITTING AVAILABLE

DW2000-102-2

				DRAWN / DATE ADH 10/1/14	MATERIAL SEE NOTE 1
				APPRD. / DATE REH 9/15/15	
REV	DESCRIPTION	BY / DATE	CCN		
	ALL DIMENSIONS ARE IN DECIMAL INCHES TOLERANCES UNLESS OTHERWISE SPECIFIED	THIRD ANGLE PROJECTION ANSI 14.5M		SHOT WEIGHT:	NOTES: 1.) REFERENCE COMPONENT PRINTS FOR DETAILS 2.) PATENT 9,162,816
	POLYETHYLENE ±1% @ 68°F			SHIPPING WEIGHT: STANDARD 907 LBS. FINISH:	

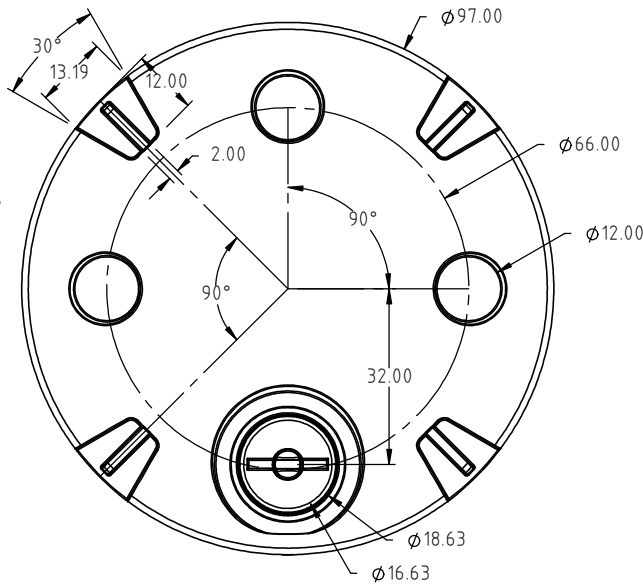
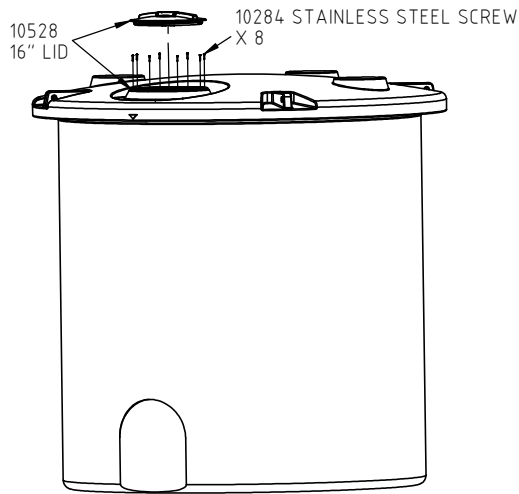


Heritage Products (866)839-1866  
Sales@heritagepro.com

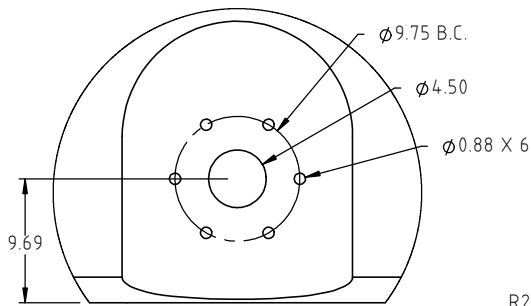
4010 HOSPERS DRIVE S. BOX 425, HOSPERS, IOWA 51238-0425

DESCRIPTION	2000 GALLON DUAL LINE™ TANK ASSEMBLY	
SCALE	N.S.	PART NO. DW2000-102

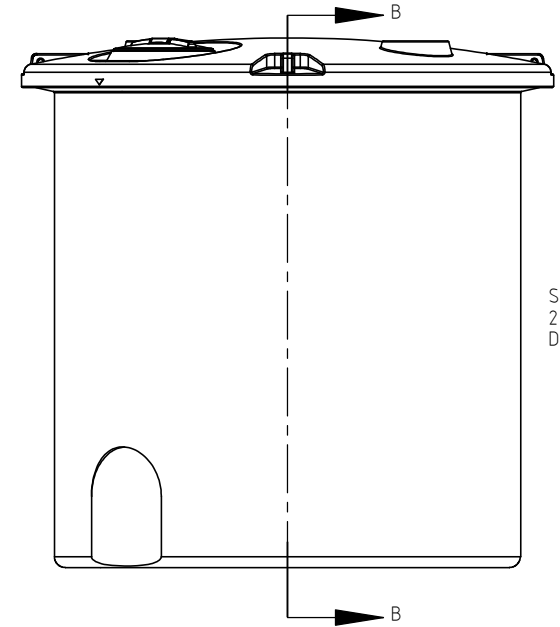
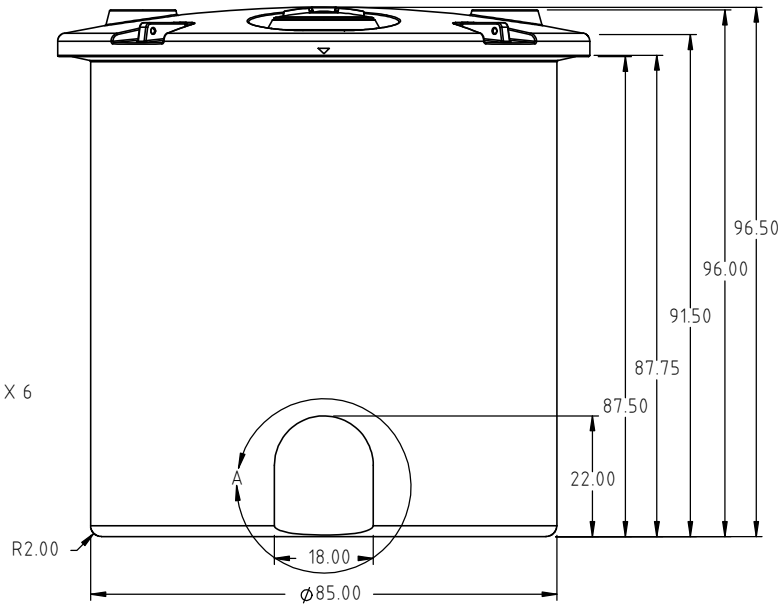
Copyright. All information furnished within this document, electronic file or design correspondence is the property of Den Hartog Industries, Inc. and shall not be used, disclosed to others or copied without the expressed written consent of Den Hartog Industries, Inc.



FITTING OPTIONAL



DETAIL A  
SCALE 1:15



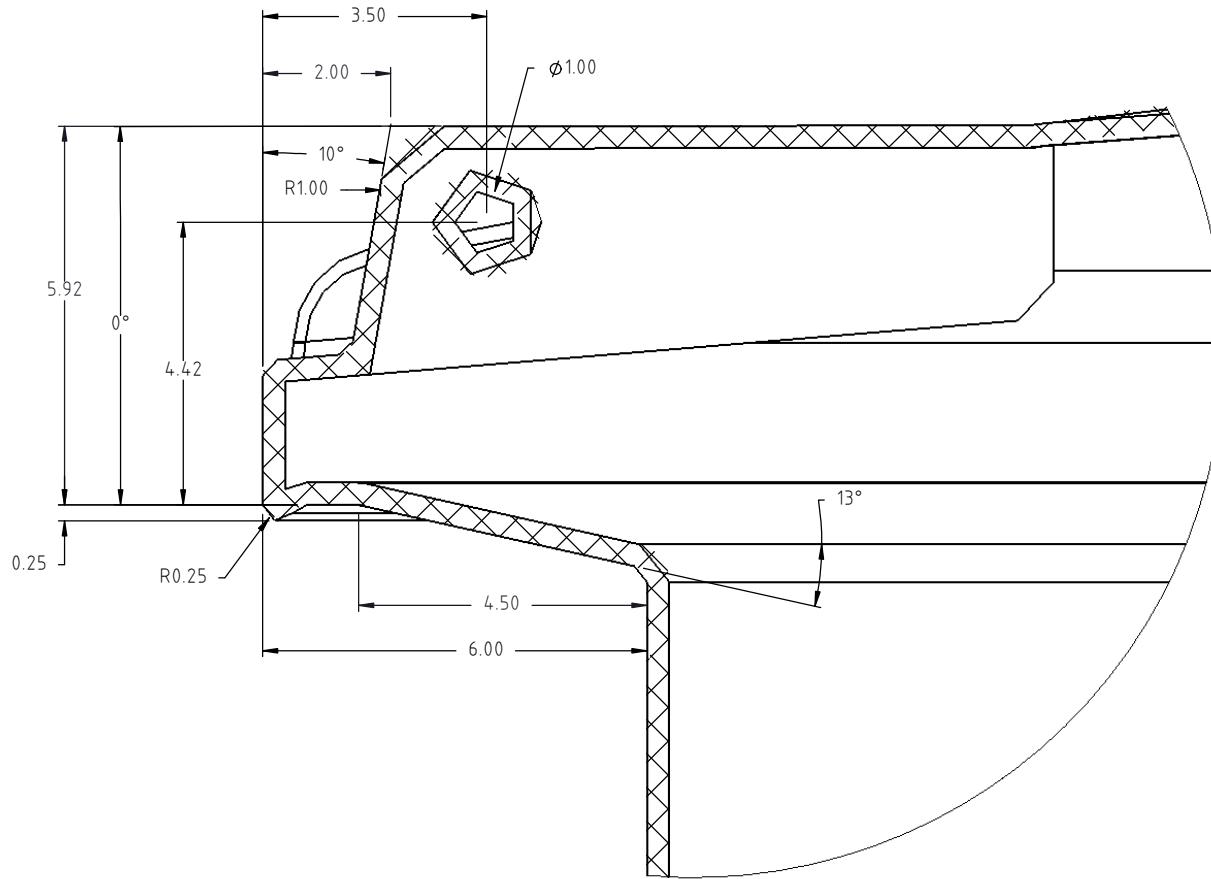
SEE SHEET  
2 OF 2 FOR  
DETAILS

REV	DESCRIPTION	BY / DATE	CCN	DRAWN / DATE ADH 10/16/12	MATERIAL 10420
				APPRD. / DATE REH 9/22/15	
ALL DIMENSIONS ARE IN DECIMAL INCHES TOLERANCES UNLESS OTHERWISE SPECIFIED		THIRD ANGLE PROJECTION ANSI 14.5M		SHOT WEIGHT: 473 LBS.	NOTES: 1.) 0.35 NOM. WALL THICKNESS 2.) PATENT 9,162,816
POLYETHYLENE ±1% @ 68°F				SHIPPING WEIGHT: 475 LBS.	
METAL DECIMAL ± .125" FRACTION ± 1/4" ANGLE ± 1°				FINISH:	

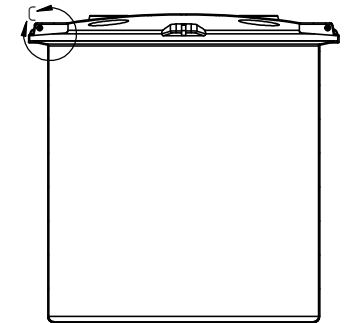


4010 HOSPERS DRIVE S. BOX 425, HOSPERS, IOWA 51238-0425

DESCRIPTION 2000 GALLON DUAL LINE™ TANK-INNER TANK-1 OF 2	
SCALE N.S.	PART NO. DW2000-102-1



DETAIL C  
SCALE 1:3



SECTION B-B  
SCALE 1:60

				DRAWN / DATE ADH 10/16/12		MATERIAL	
				APPROD. / DATE REH 9/22/15			
REV	DESCRIPTION	BY / DATE	CCN	SHOT WEIGHT:		NOTES: 1.) PATENT 9,162,816	
ALL DIMENSIONS ARE IN DECIMAL INCHES TOLERANCES UNLESS OTHERWISE SPECIFIED				SHIPPING WEIGHT:			
POLYETHYLENE ±1% @ 68°F				FINISH:			
METAL DECIMAL ± .125" FRACTION ± 1/4" ANGLE ± 1°		THIRD ANGLE PROJECTION ANSI 14.5M				DESCRIPTION 1500 GALLON DUAL LINE™ TANK-INNER TANK- 2 OF 2	
						SCALE N.S.	PART NO.

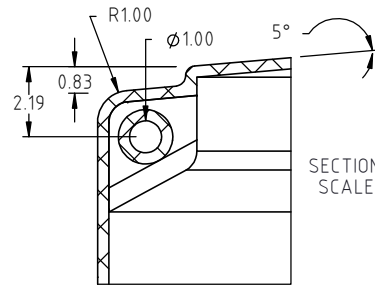
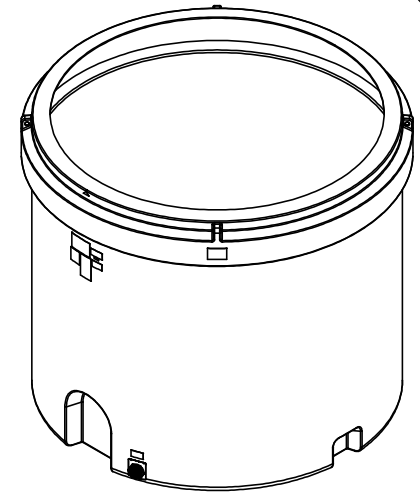
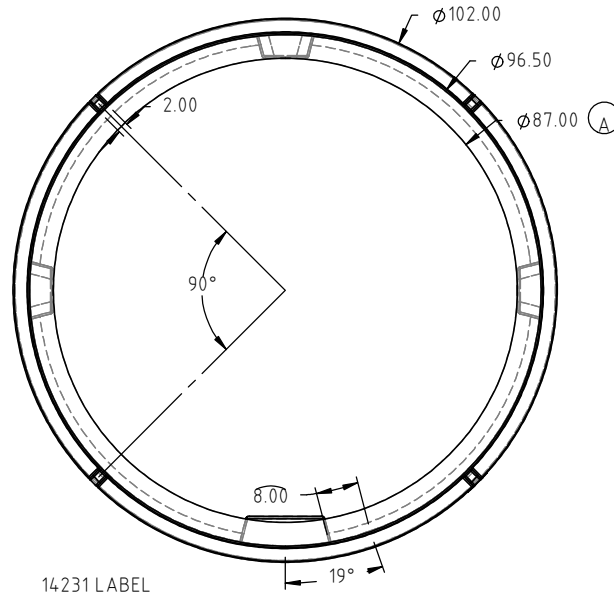
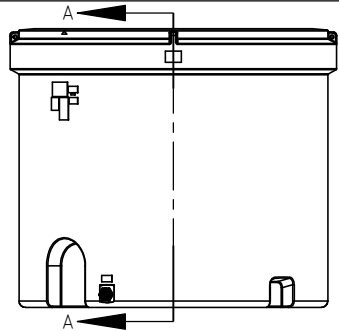
4010 HOSPERS DRIVE S. BOX 425, HOSPERS, IOWA 51238-0425

© DEN HARTOG INDUSTRIES, INC.

Copyright. All information furnished within this document, electronic file or design correspondence is the property of Den Hartog Industries, Inc. and shall not be used, disclosed to others or copied without the expressed written consent of Den Hartog Industries, Inc.

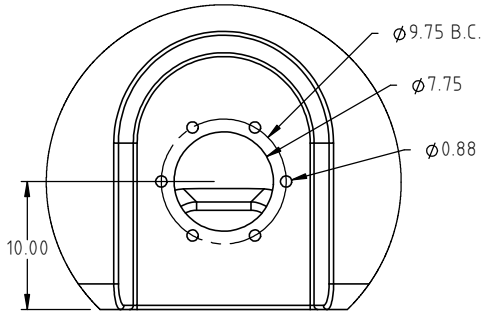
DW2000-102-2

A

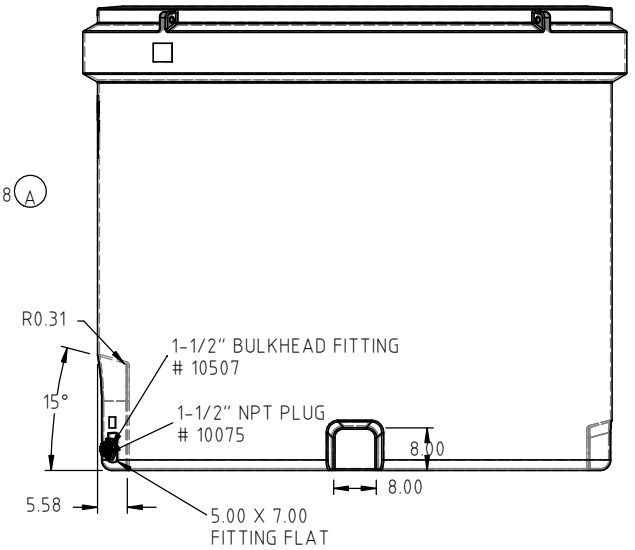
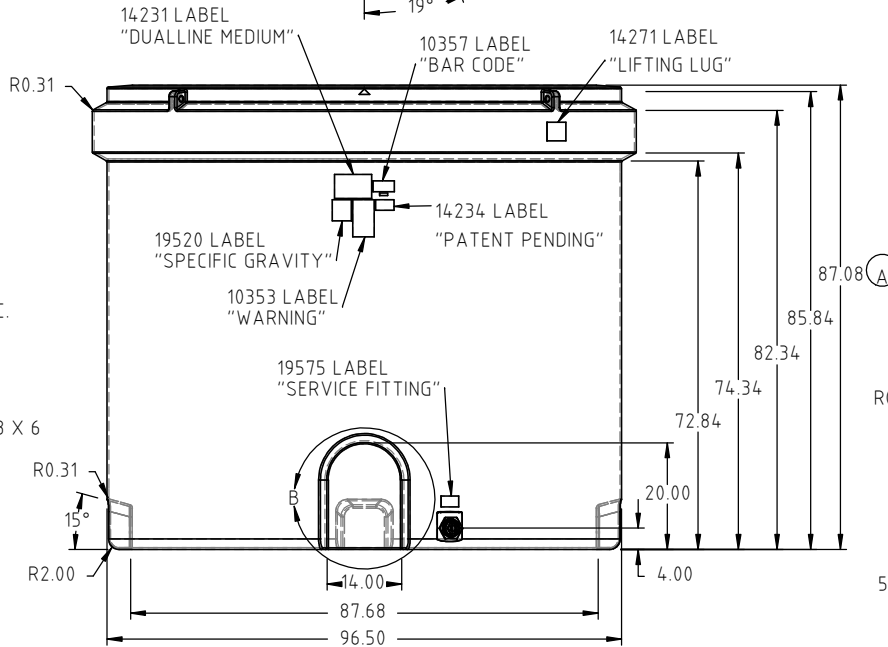


SECTION A-A  
SCALE 1:6

FITTING OPTIONAL



DETAIL B  
SCALE 1:15



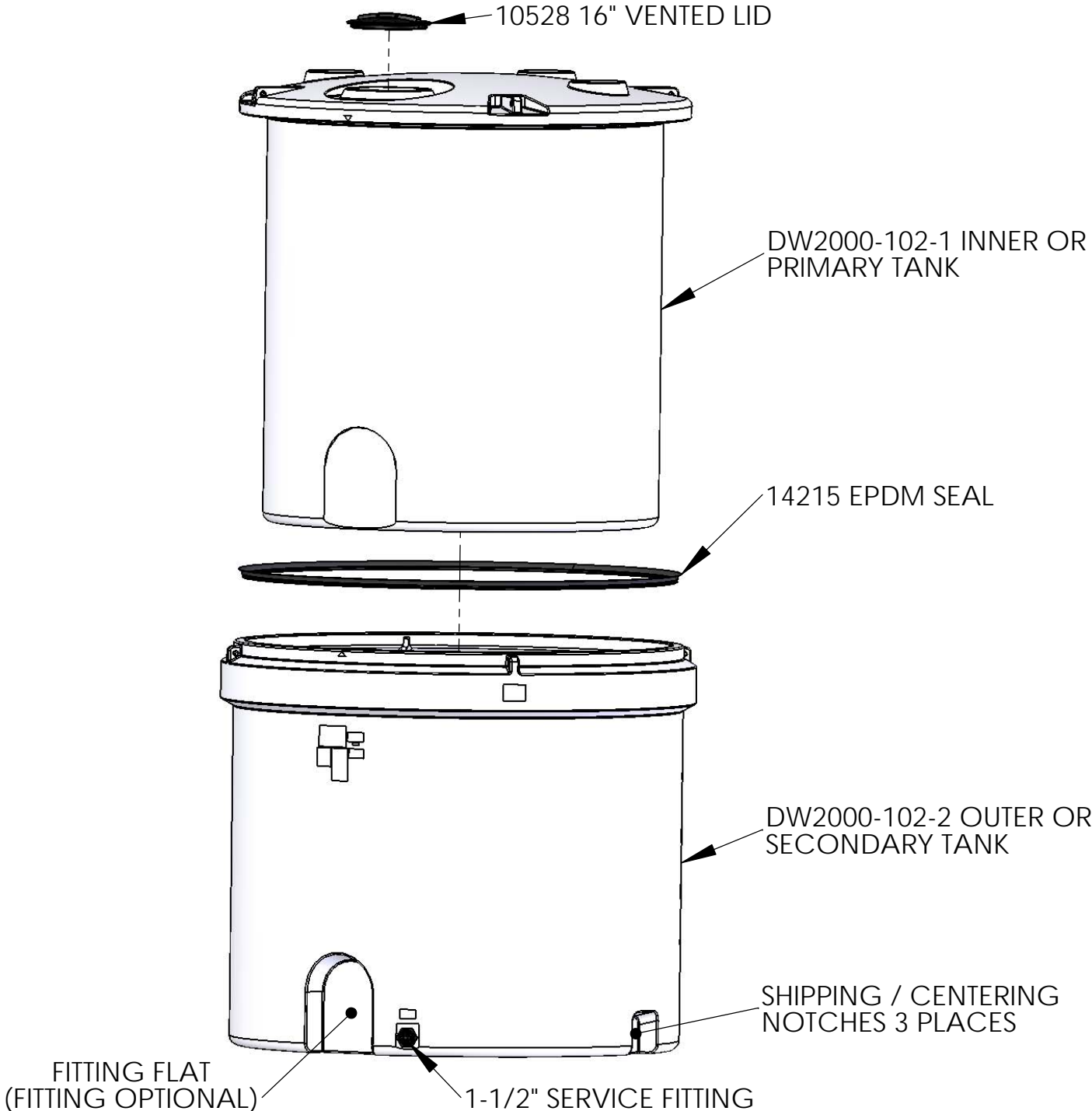
				DRAWN / DATE ADH 2/18/14	MATERIAL 10420
A	87.00" WAS 92.50", 87.08" WAS 86.84"	ADH 4/18/16	3168	APPRD. / DATE REH 9/15/15	
REV	DESCRIPTION	BY / DATE	CCN		
ALL DIMENSIONS ARE IN DECIMAL INCHES TOLERANCES UNLESS OTHERWISE SPECIFIED		THIRD ANGLE PROJECTION ANSI 14.5M		SHOT WEIGHT: 503 LBS	NOTES: 1.) 0.35 NOM. WALL THICKNESS 2.) PATENT 9,162,816
POLYETHYLENE ±1% @ 68°F		METAL DECIMAL ± .125" FRACTION ± 1/4" ANGLE ± 1°		SHIPPING WEIGHT: 422 LBS.	



4010 HOSPERS DRIVE S. BOX 425, HOSPERS, IOWA 51238-0425

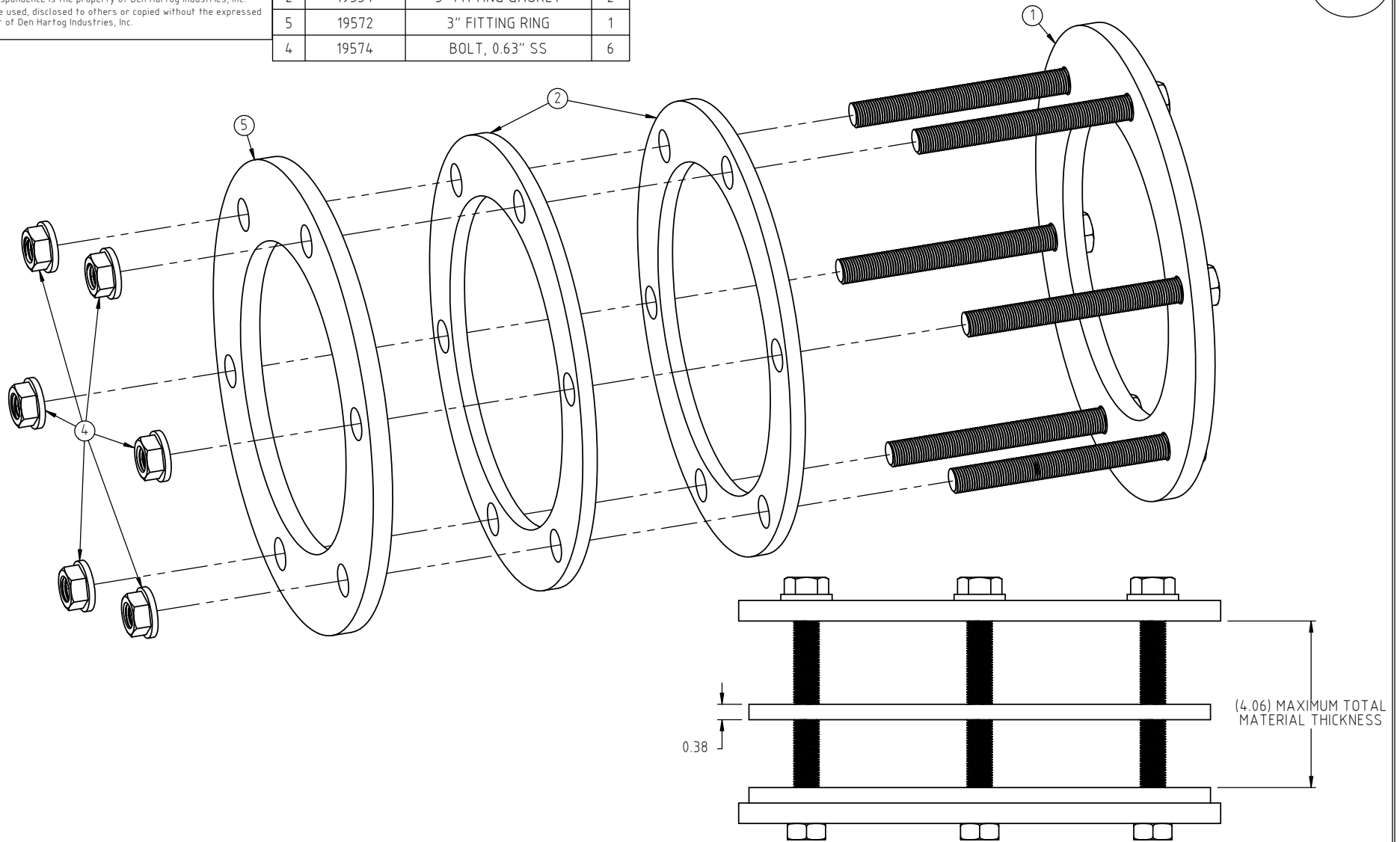
DESCRIPTION 2000 GALLON DUAL LINE™ TANK- OUTER TANK	
SCALE N.S.	PART NO. DW2000-102-2

DW2000-102 DOUBLE WALL TANK  
STANDARD COMPONENTS




Copyright. All information furnished within this document, electronic file or design correspondence is the property of Den Hartog Industries, Inc. and shall not be used, disclosed to others or copied without the expressed written consent of Den Hartog Industries, Inc.

KEY	PART NUMBER	DESCRIPTION	QTY.
1	19570	3" FITTING RING WELDMENT	1
2	19554	3" FITTING GASKET	2
5	19572	3" FITTING RING	1
4	19574	BOLT, 0.63" SS	6



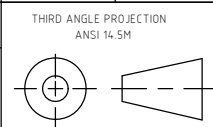
				DRAWN / DATE ADH 9/26/14	MATERIAL SEE COMPONENTS
				APPRD. / DATE REH 11/14/14	
REV	DESCRIPTION	BY / DATE	CCN	SHOT WEIGHT:	NOTES:
				SHIPPING WEIGHT: XXXX	
				FINISH: NONE	



4010 HOSPERS DRIVE S. BOX 425, HOSPERS, IOWA 51238-0425

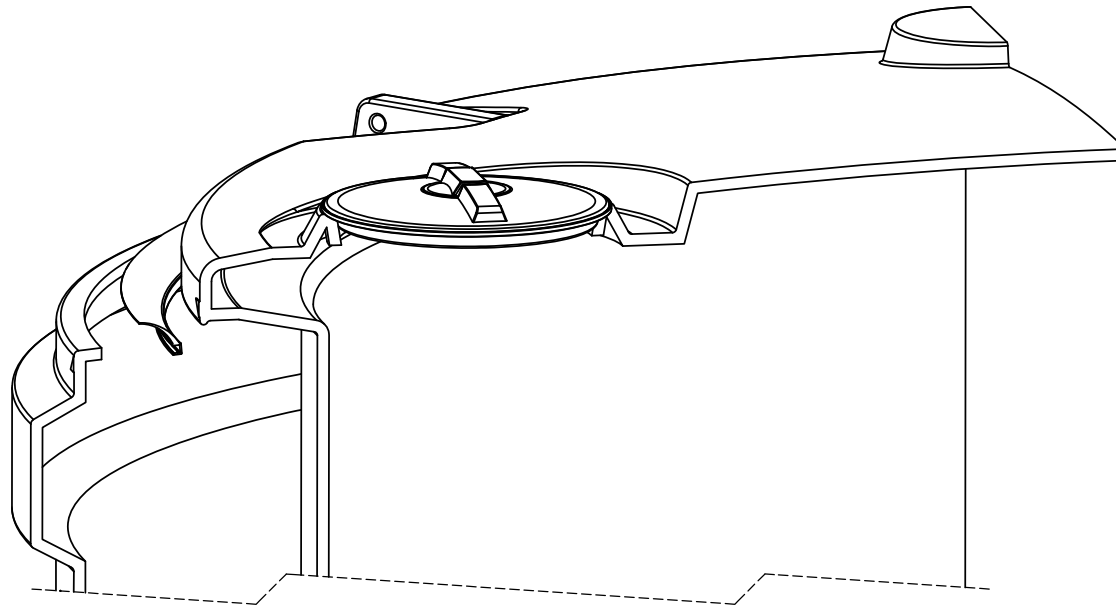
DESCRIPTION <b>3" DOUBLE WALL TANK FITTING RING ASSEMBLY</b>	
SCALE N.S.	PART NO. 19569

ALL DIMENSIONS ARE IN DECIMAL INCHES  
TOLERANCES UNLESS OTHERWISE SPECIFIED  
POLYETHYLENE METAL  
DECIMAL ± .125"  
FRACTION ± 1/4"  
ANGLE ± 1°  
±1% @ 68°F

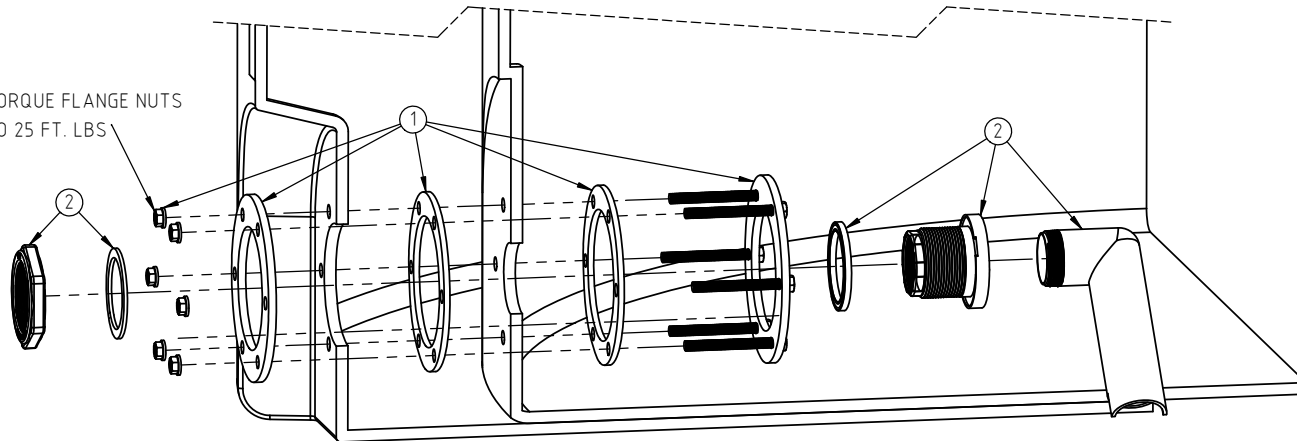


Copyright. All information furnished within this document, electronic file or design correspondence is the property of Den Hartog Industries, Inc. and shall not be used, disclosed to others or copied without the expressed written consent of Den Hartog Industries, Inc.

KEY	PART NUMBER	DESCRIPTION	QTY.
1	19569	3" DOUBLE WALL RING ASSEMBLY	1
2	13811	BULKHEAD, 3" FITTING	1



TORQUE FLANGE NUTS  
TO 25 FT. LBS



				DRAWN / DATE ADH 10/16/13	MATERIAL
				APPRD. / DATE REH 9/22/15	
REV	DESCRIPTION	BY / DATE	CCN	SHOT WEIGHT:	NOTES:
				SHIPPING WEIGHT:	1.) PATENT PENDING
				FINISH:	



4010 HOSPERS DRIVE S. BOX 425, HOSPERS, IOWA 51238-0425

DESCRIPTION	3" FITTING ASSEMBLY INSTALLATION	
SCALE	N.S.	PART NO. 19569 -INSTALL

ALL DIMENSIONS ARE IN DECIMAL INCHES  
TOLERANCES UNLESS OTHERWISE SPECIFIED

POLYETHYLENE  
±1% @ 68°F

METAL  
DECIMAL ± .125"  
FRACTION ± 1/4"  
ANGLE ± 1°

THIRD ANGLE PROJECTION  
ANSI 14.5M

