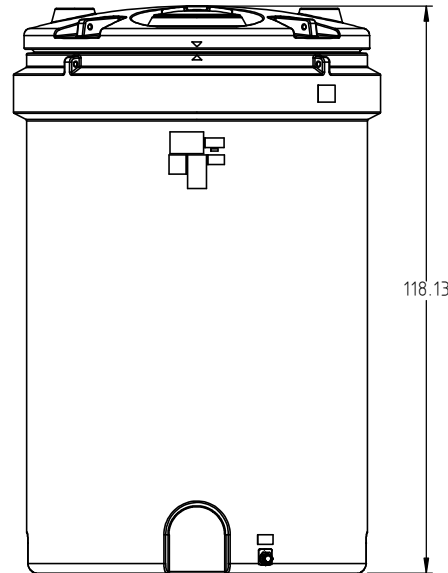
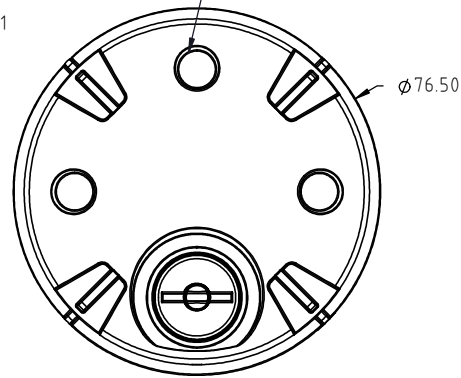
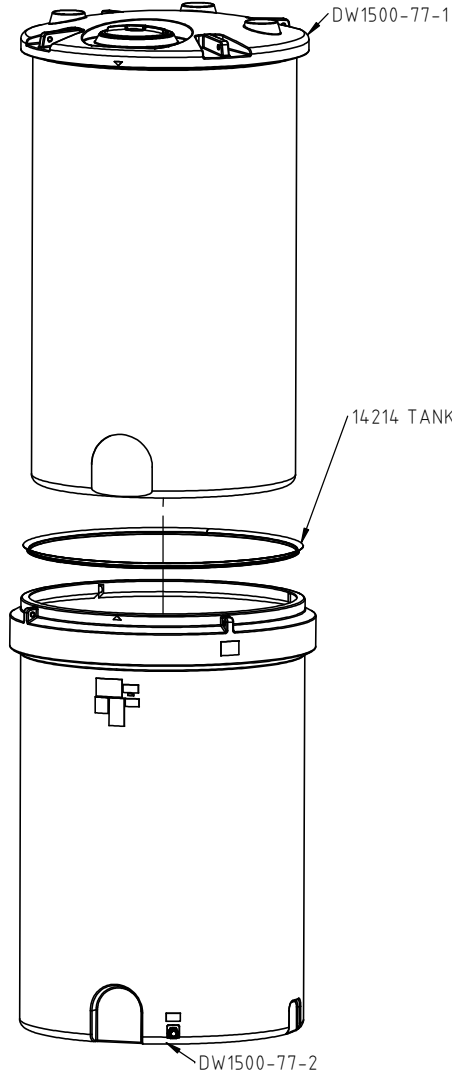


© DEN HARTOG INDUSTRIES, INC.

Copyright. All information furnished within this document, electronic file or design correspondence is the property of Den Hartog Industries, Inc. and shall not be used, disclosed to others or copied without the expressed written consent of Den Hartog Industries, Inc.

STANDARD TANK ASSEMBLY

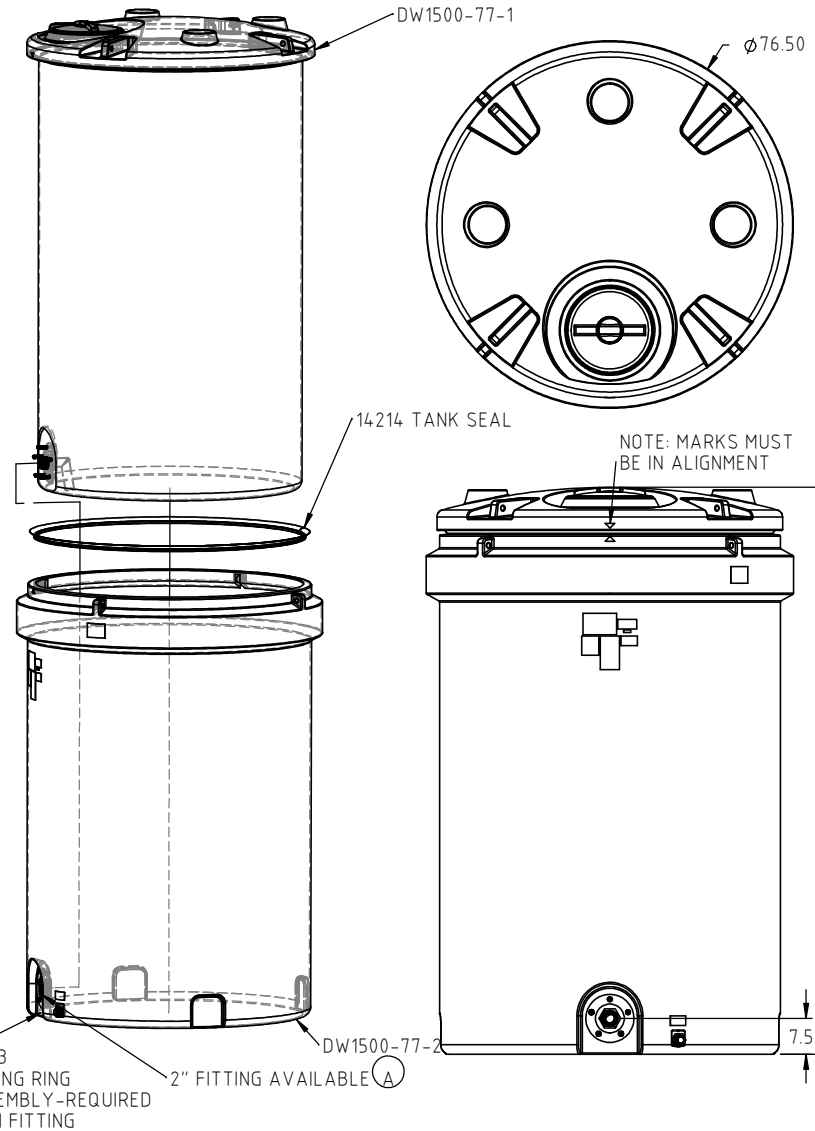
3 X 7.5" DIA. FITTING FLATS ON TANK TOP FOR UTILITIES



TANK ASSEMBLY WITH OPTIONAL FITTING

DW1500-77

A



19563 FITTING RING ASSEMBLY-REQUIRED WITH FITTING

2" FITTING AVAILABLE (A)

| | | | | | |
|--|---------------------------------------|---|------|---|--|
| | | | | DRAWN / DATE ADH 8/8/14 | MATERIAL SEE NOTE 1. |
| A | FITTING LISTED ON PRINT STANDARDIZED. | ADH 10/15/15 | 3141 | APPRD. / DATE REH 8/22/14 | |
| REV | DESCRIPTION | BY / DATE | CCN | | |
| ALL DIMENSIONS ARE IN DECIMAL INCHES TOLERANCES UNLESS OTHERWISE SPECIFIED | | THIRD ANGLE PROJECTION ANSI 14.5M | | SHOT WEIGHT: | NOTES: 1.) REFERENCE COMPONENT PRINTS FOR DETAILS 2.) PATENT PENDING |
| POLYETHYLENE ±1% @ 68°F | | METAL DECIMAL ± .125" FRACTION ± 1/4" ANGLE ± 1° | | SHIPPING WEIGHT: STANDARD = 673 LBS. | |
| | | FINISH: | | | |



Heritage Products

(866) 839-1866

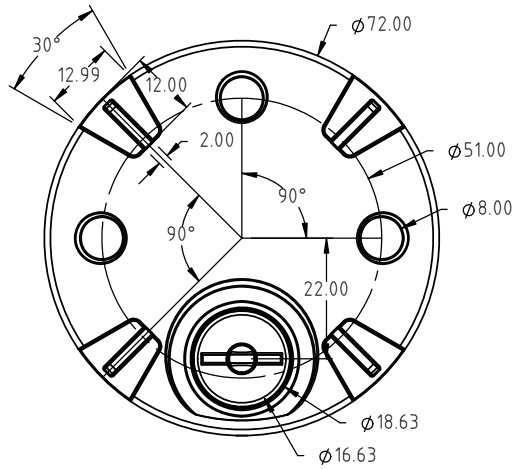
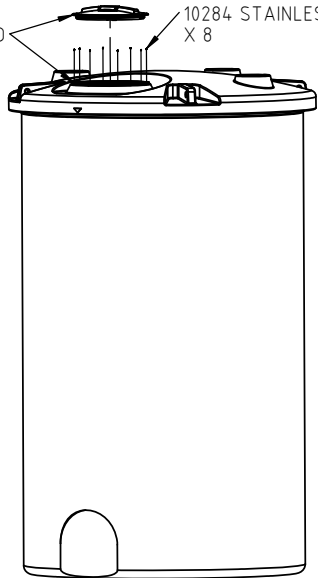
Sales@heritagepro.com

4010 HOSPERS DRIVE S. BOX 425, HOSPERS, IOWA 51238-0425

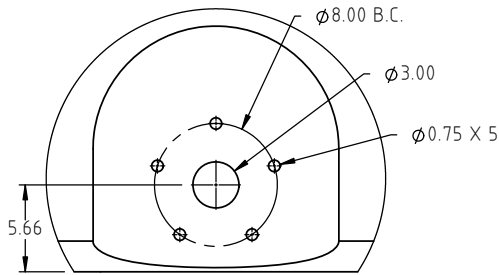
| | |
|---|-----------------------|
| DESCRIPTION 1500 GALLON DUAL LINE™ TANK ASSEMBLY | |
| SCALE N.S. | PART NO. DW1500-77 |

Copyright. All information furnished within this document, electronic file or design correspondence is the property of Den Hartog Industries, Inc. and shall not be used, disclosed to others or copied without the expressed written consent of Den Hartog Industries, Inc.

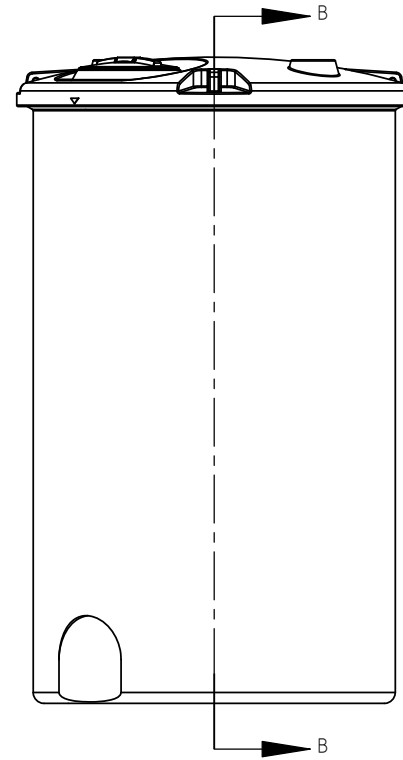
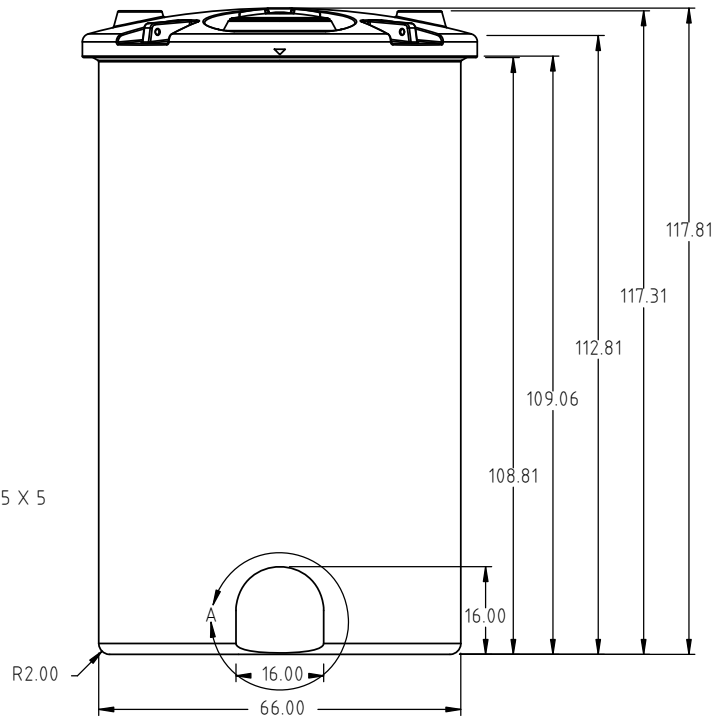
10528 16" LID
10284 STAINLESS STEEL SCREW X 8



FITTING OPTIONAL



DETAIL A
SCALE 2:25



SEE SHEET
2 OF 2 FOR
DETAILS

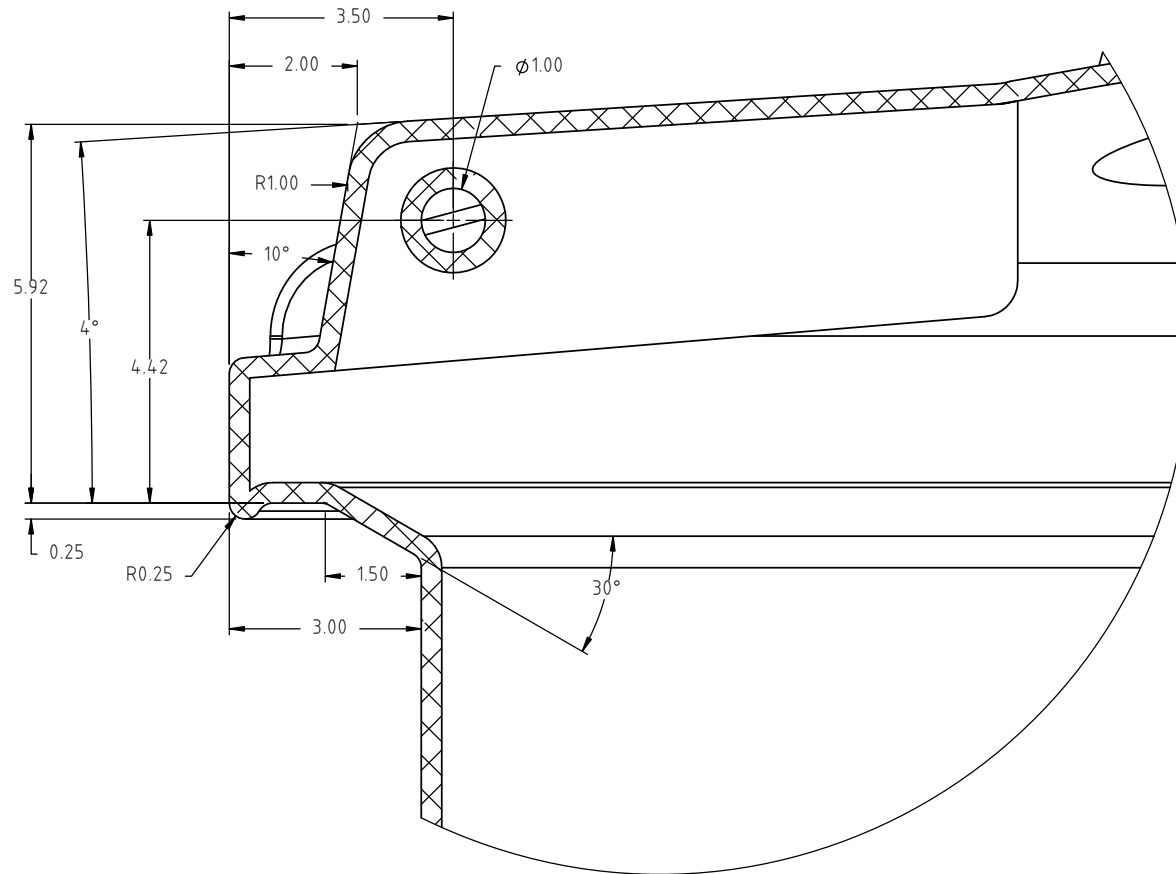
| | | | | | |
|-----|---|--------------------------------------|-----|------------------------------|--|
| | | | | DRAWN / DATE ADH 10/16/12 | MATERIAL 10420 |
| | | | | APPRD. / DATE REH 8/22/14 | |
| REV | DESCRIPTION | BY / DATE | CCN | | |
| | ALL DIMENSIONS ARE IN DECIMAL INCHES TOLERANCES UNLESS OTHERWISE SPECIFIED | THIRD ANGLE PROJECTION ANSI 14.5M | | SHOT WEIGHT: 350 LBS. | NOTES: 1.) 0.32 NOM. WALL THICKNESS 2.) PATENT PENDING |
| | POLYETHYLENE | | | SHIPPING WEIGHT: 352 LBS. | |
| | ±1% @ 68°F | | | FINISH: | |



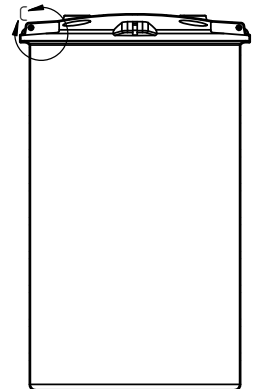
4010 HOSPERS DRIVE S. BOX 425, HOSPERS, IOWA 51238-0425

| | |
|--|-------------------------|
| DESCRIPTION 1500 GALLON DUAL LINE™ TANK-INNER TANK-1 OF 2 | |
| SCALE N.S. | PART NO. DW1500-77-1 |

PRELIMINARY



DETAIL C
SCALE 1:3



SECTION D-D

SCALE 1:60

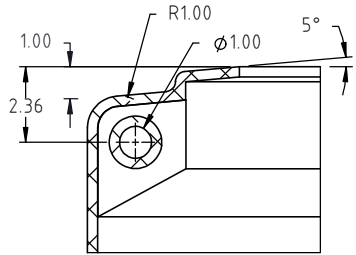
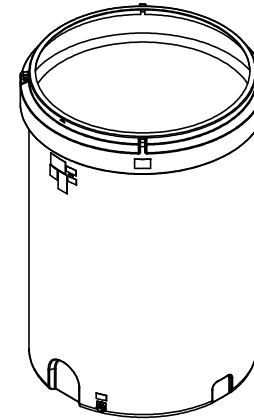
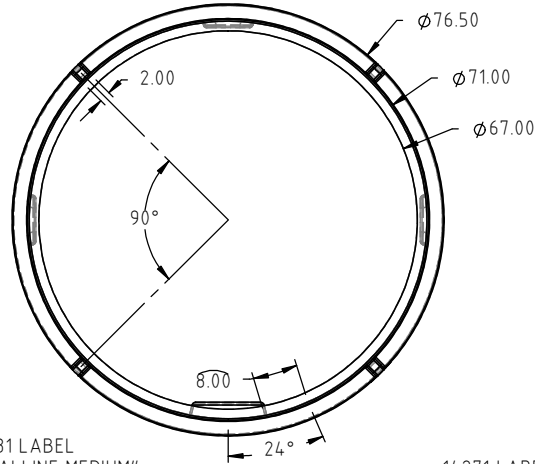
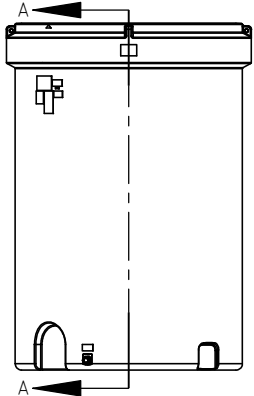
| | | | | | |
|---|-------------|--|-----|------------------------------|------------------------------|
| | | | | DRAWN / DATE ADH 10/16/12 | MATERIAL |
| | | | | APPRD. / DATE XXXX | |
| REV | DESCRIPTION | BY / DATE | CCN | | |
| ALL DIMENSIONS ARE IN DECIMAL INCHES TOLERANCES UNLESS OTHERWISE SPECIFIED | | THIRD ANGLE PROJECTION ANSI 14.5M | | SHOT WEIGHT: | NOTES: 1.) PATENT PENDING |
| POLYETHYLENE | | METAL DECIMAL $\pm .125"$ FRACTION $\pm 1/4"$ ANGLE $\pm 1^\circ$ | | SHIPPING WEIGHT: | |
| $\pm 1\%$ @ 68°F | | | | FINISH: | |



4010 HOSPERS DRIVE S. BOX 425, HOSPERS, IOWA 51238-0425

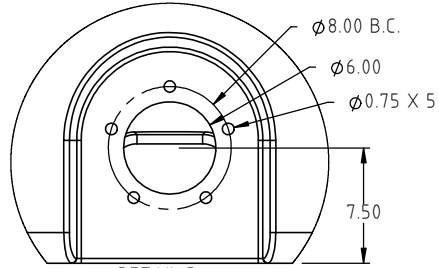
| | |
|--|----------|
| DESCRIPTION 1500 GALLON DUAL LINET™ TANK-INNER TANK- 2 OF 2 | |
| SCALE N.S. | PART NO. |

Copyright. All information furnished within this document, electronic file or design correspondence is the property of Den Hartog Industries, Inc. and shall not be used, disclosed to others or copied without the expressed written consent of Den Hartog Industries, Inc.

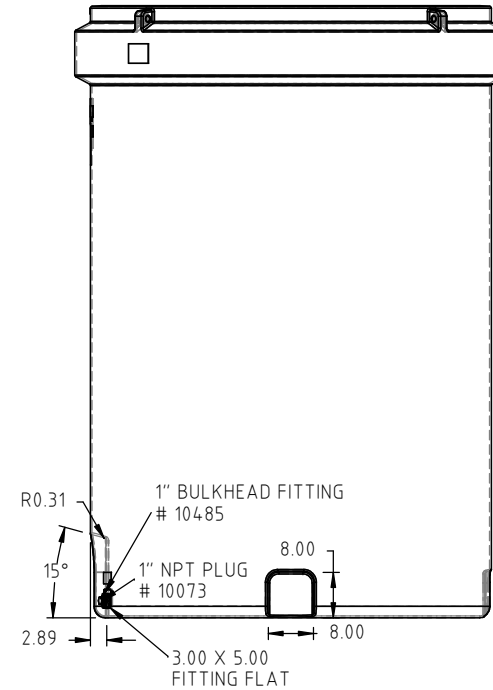
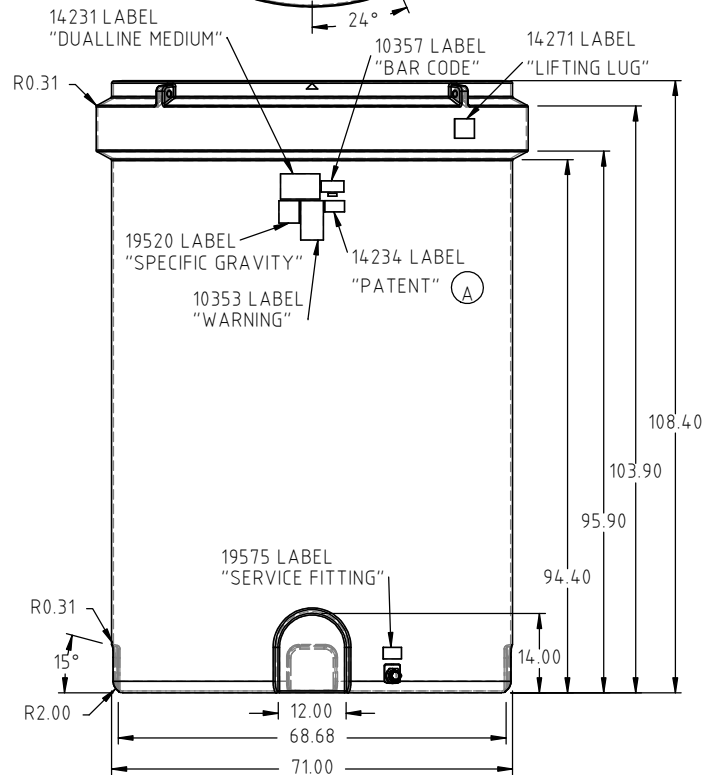


SECTION A-A
SCALE 1:6

FITTING OPTIONAL



DETAIL B
SCALE 2:25



| | | | | | |
|---|-------------------------------|---|------|-------------------------------|--|
| | | | | DRAWN / DATE ADH 2/18/14 | MATERIAL 10420 |
| A | "PATENT" WAS "PATENT PENDING" | ADH 4/21/16 | 3242 | APPROD. / DATE REH 8/22/14 | |
| REV | DESCRIPTION | BY / DATE | CCN | | |
| ALL DIMENSIONS ARE IN DECIMAL INCHES TOLERANCES UNLESS OTHERWISE SPECIFIED | | THIRD ANGLE PROJECTION ANSI 14.5M | | SHOT WEIGHT: 339 LBS. | NOTES: 1.) 0.34 NOM. WALL THICKNESS 2.) PATENT 9,162,816 |
| POLYETHYLENE | | METAL DECIMAL ± .125" FRACTION ± 1/4" ANGLE ± 1° | | SHIPPING WEIGHT: 309 LBS. | |
| ±1% @ 68°F | | | | FINISH: | |



4010 HOSPERS DRIVE S. BOX 425, HOSPERS, IOWA 51238-0425

| | |
|--|-------------------------|
| DESCRIPTION 1500 GALLON DUAL LINE™ TANK- OUTER TANK | |
| SCALE N.S. | PART NO. DW1500-77-2 |