

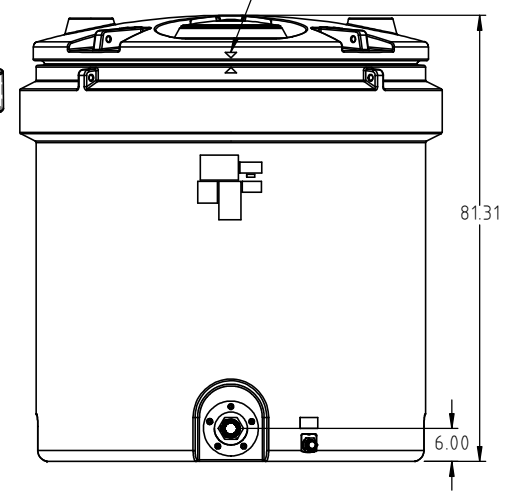
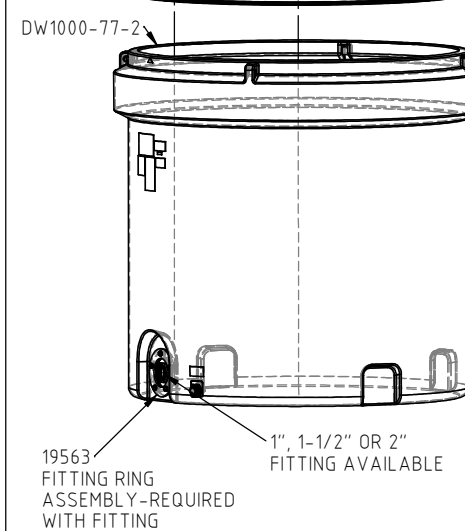
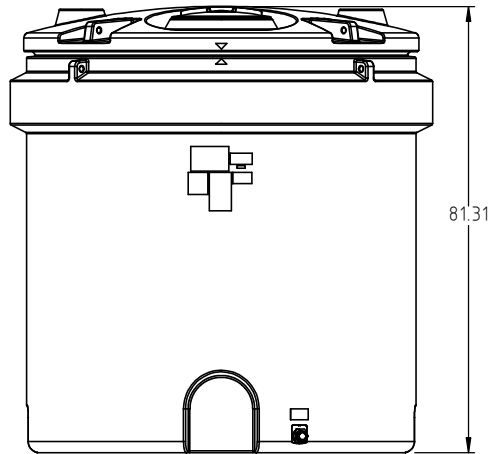
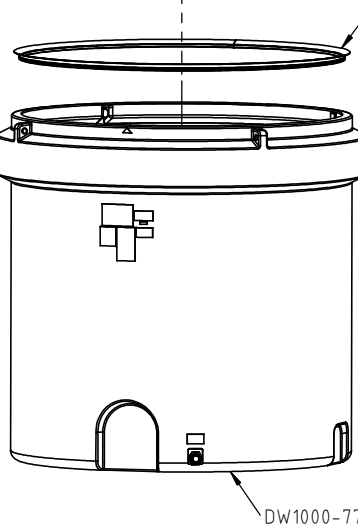
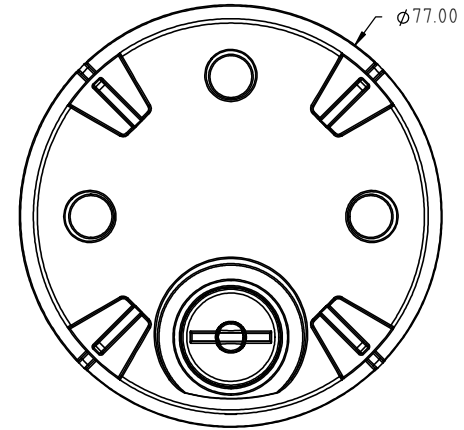
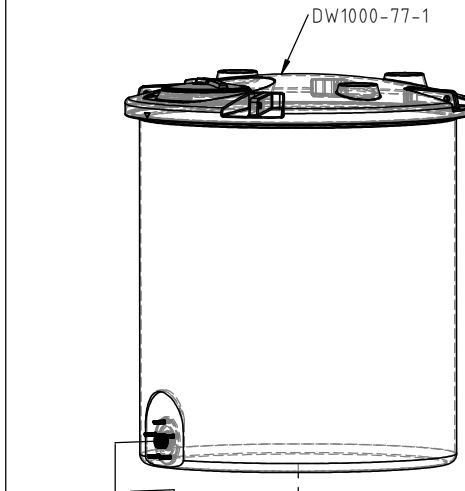
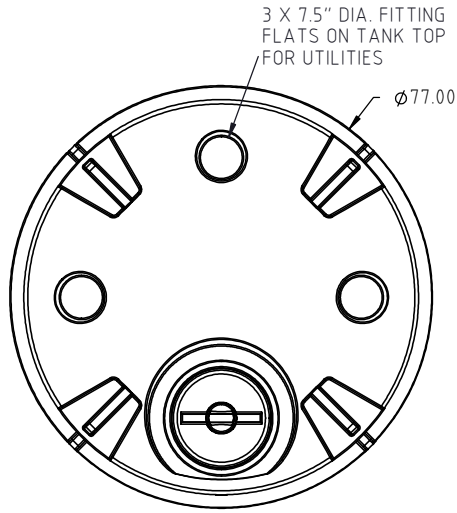
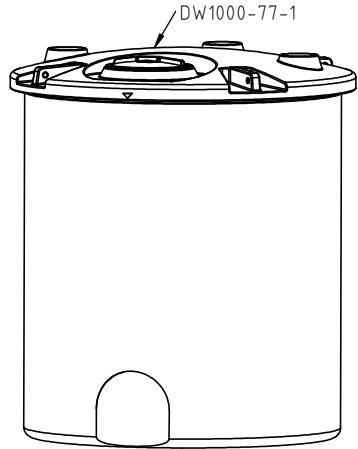
© DEN HARTOG INDUSTRIES, INC.

Copyright. All information furnished within this document, electronic file or design correspondence is the property of Den Hartog Industries, Inc. and shall not be used, disclosed to others or copied without the expressed written consent of Den Hartog Industries, Inc.


STANDARD TANK ASSEMBLY

TANK ASSEMBLY WITH OPTIONAL FITTING

DW1000-77



REV	DESCRIPTION	BY / DATE	CCN	DRAWN / DATE ADH 8/7/14	MATERIAL SEE NOTE 1.
				APPROD. / DATE REH 8/22/14	
	ALL DIMENSIONS ARE IN DECIMAL INCHES TOLERANCES UNLESS OTHERWISE SPECIFIED	THIRD ANGLE PROJECTION ANSI 14.5M	SHOT WEIGHT:	NOTES:	DESCRIPTION 1000 GALLON DUAL LINE™ TANK ASSEMBLY
	POLYETHYLENE ±1% @ 68°F		SHIPPING WEIGHT: STANDARD = 522 LBS.	1.) REFERENCE COMPONENT PRINTS FOR DETAILS 2.) PATENT PENDING	



Heritage Products (866) 839-1866
Sales@heritagepro.com

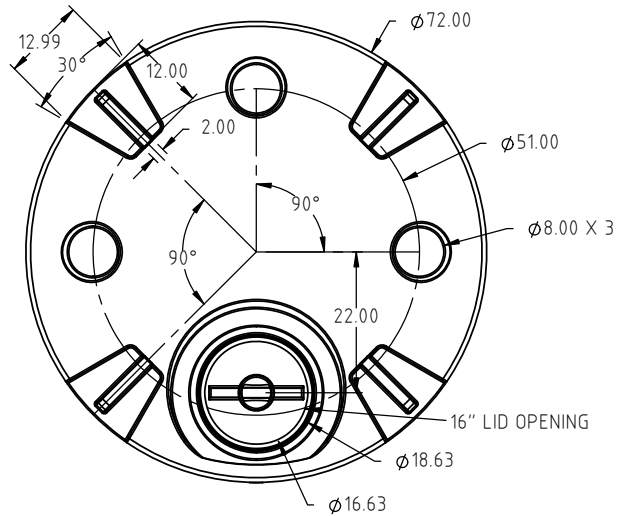
4010 HOSPERS DRIVE S. BOX 425, HOSPERS, IOWA 51238-0425

SCALE	N.S.	PART NO.	DW1000-77
-------	------	----------	-----------

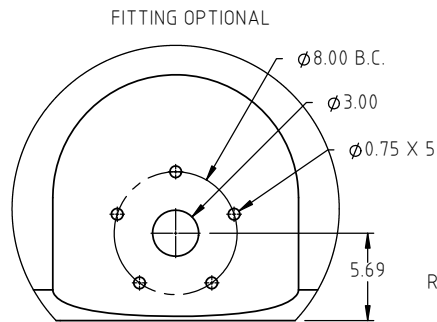
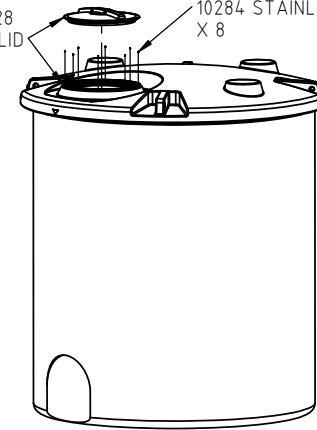
© DEN HARTOG INDUSTRIES, INC.

Copyright. All information furnished within this document, electronic file or design correspondence is the property of Den Hartog Industries, Inc. and shall not be used, disclosed to others or copied without the expressed written consent of Den Hartog Industries, Inc.

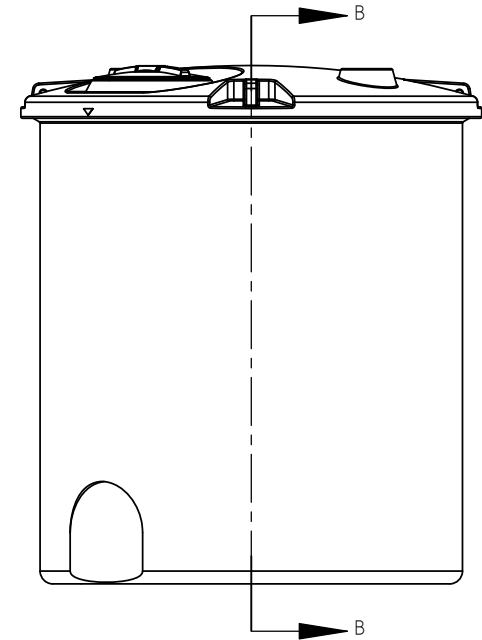
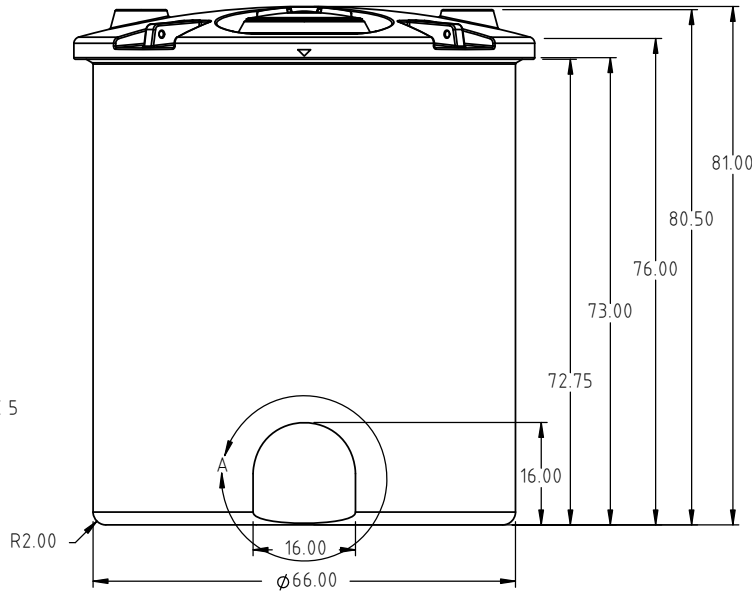
DW1000-77-1



10528 16" LID
10284 STAINLESS STEEL SCREW X 8



DETAIL A
SCALE 2:25



SEE SHEET
2 OF 2 FOR
DETAILS

REV	DESCRIPTION	BY / DATE	CCN	DRAWN / DATE ADH 10/16/12	MATERIAL 10420
				APPRD. / DATE REH 5/13/14	
ALL DIMENSIONS ARE IN DECIMAL INCHES TOLERANCES UNLESS OTHERWISE SPECIFIED		THIRD ANGLE PROJECTION ANSI 14.5M		SHOT WEIGHT: 260 LBS.	NOTES: 1.) 0.31 NOM. WALL THICKNESS 2.) PATENT PENDING
POLYETHYLENE		METAL DECIMAL ± .125" FRACTION ± 1/4" ANGLE ± 1°		SHIPPING WEIGHT: 262 LBS.	
±1% @ 68°F				FINISH:	

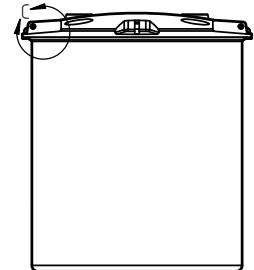
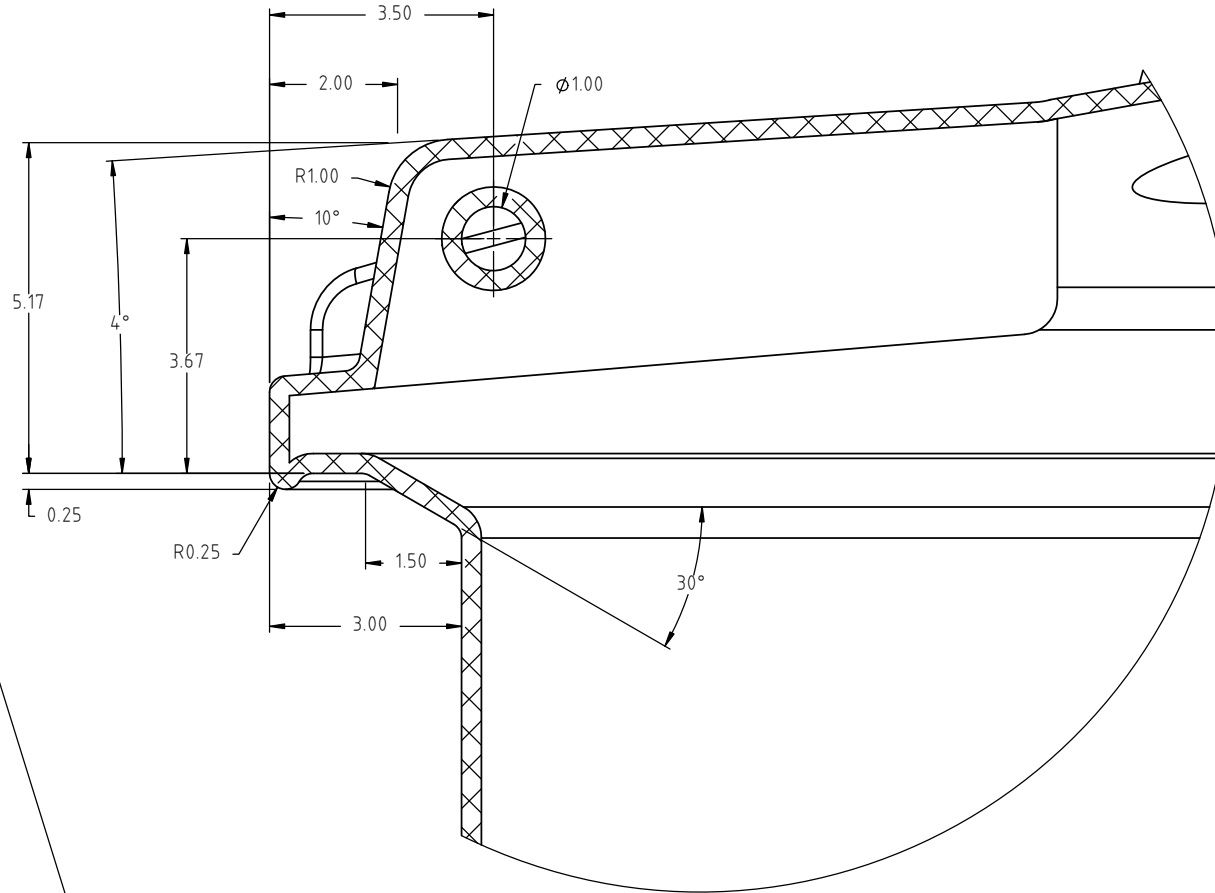


4010 HOSPERS DRIVE S. BOX 425, HOSPERS, IOWA 51238-0425

DESCRIPTION
1000 GALLON DUAL LINE™ TANK-INNER TANK-1 OF 2

SCALE
N.S.


PART NO.
DW1000-77-1



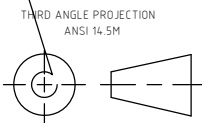
SECTION B-B-B-B
SCALE 1:60

DETAIL C
SCALE 1:3

REV	DESCRIPTION	BY / DATE	CCN	DRAWN / DATE ADH 10/16/12	MATERIAL
				APPRD. / DATE XXXX	
				SHOT WEIGHT:	NOTES:
				SHIPPING WEIGHT:	
				FINISH:	

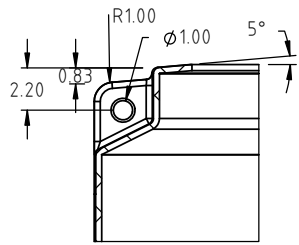
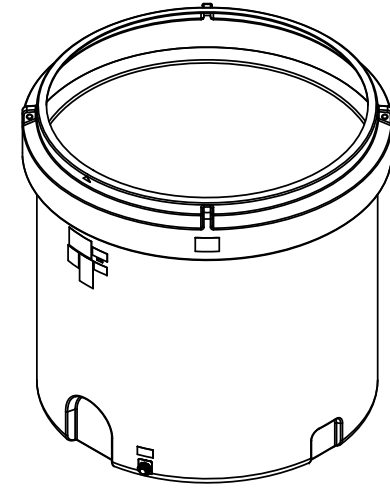
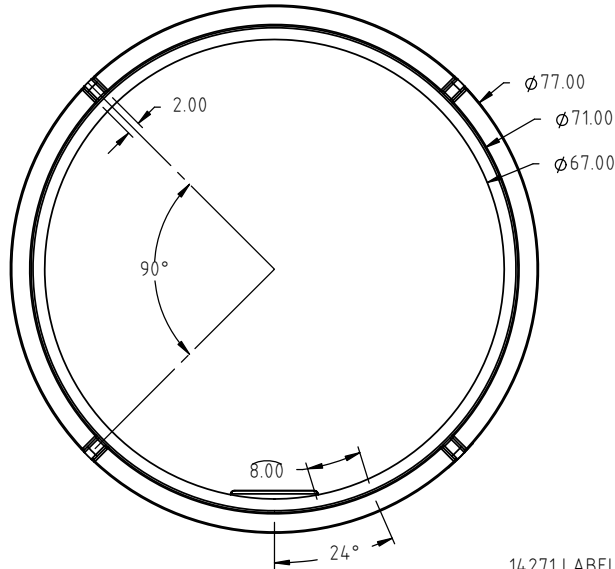
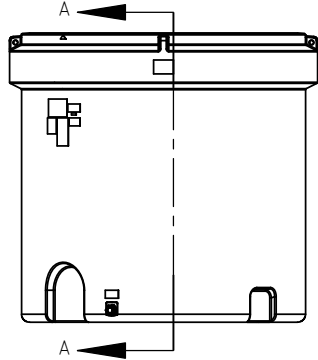
		4010 HOSPERS DRIVE S. BOX 425, HOSPERS, IOWA 51238-0425	
		DESCRIPTION 1000 GALLON DOUBLE WALL TANK-INNER TANK- 2 OF 2	
SCALE N.S.	PART NO.		

ALL DIMENSIONS ARE IN DECIMAL INCHES
TOLERANCES UNLESS OTHERWISE SPECIFIED
POLYETHYLENE METAL
DECIMAL ± .125"
FRACTION ± 1/4"
ANGLE ± 1°

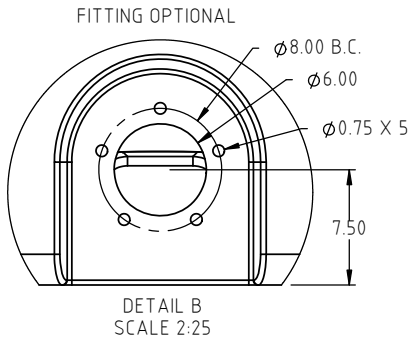
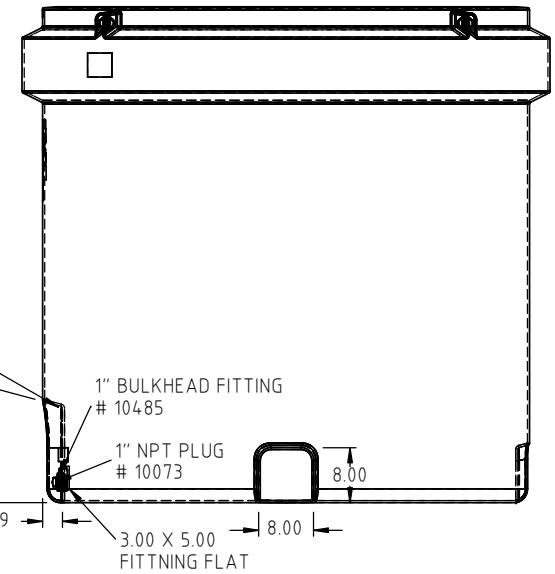
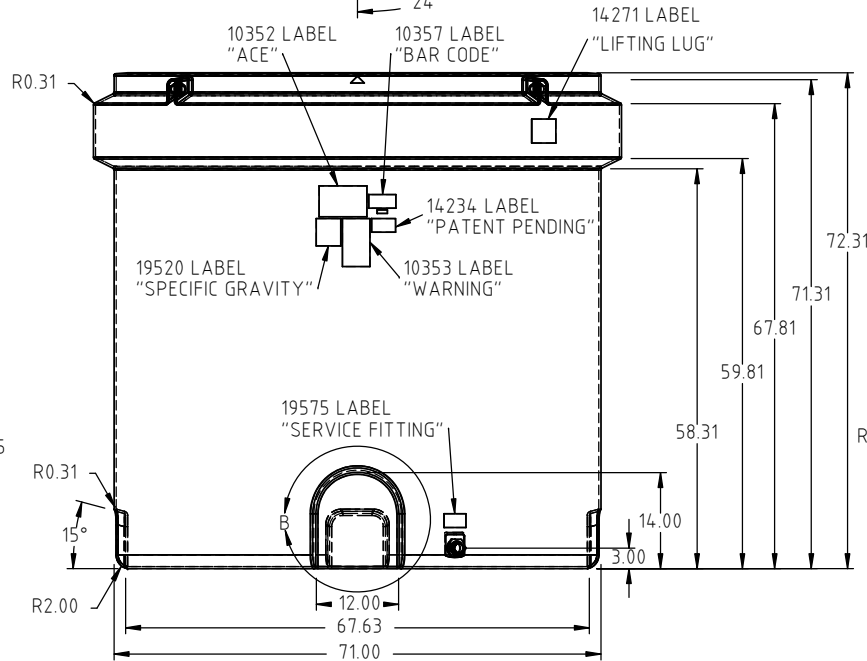


THIRD ANGLE PROJECTION
ANSI 14.5M

Copyright. All information furnished within this document, electronic file or design correspondence is the property of Den Hartog Industries, Inc. and shall not be used, disclosed to others or copied without the expressed written consent of Den Hartog Industries, Inc.



SECTION A-A
SCALE 1 : 10



FITTING OPTIONAL

DETAIL B
SCALE 2:25

REV	DESCRIPTION	BY / DATE	CCN	DRAWN / DATE ADH 10/16/12	MATERIAL 10420
				APPRD. / DATE REH 5/13/14	
				SHOT WEIGHT: 260 LBS.	NOTES: 1.) 0.31 NOM. WALL THICKNESS 2.) PATENT PENDING
				SHIPPING WEIGHT: 230 LBS.	
				FINISH:	
ALL DIMENSIONS ARE IN DECIMAL INCHES TOLERANCES UNLESS OTHERWISE SPECIFIED POLYETHYLENE		THIRD ANGLE PROJECTION ANSI 14.5M			
METAL DECIMAL ± .125" FRACTION ± 1/4" ANGLE ± 1°					
±1% @ 68°F					



4010 HOSPERS DRIVE S. BOX 425, HOSPERS, IOWA 51238-0425

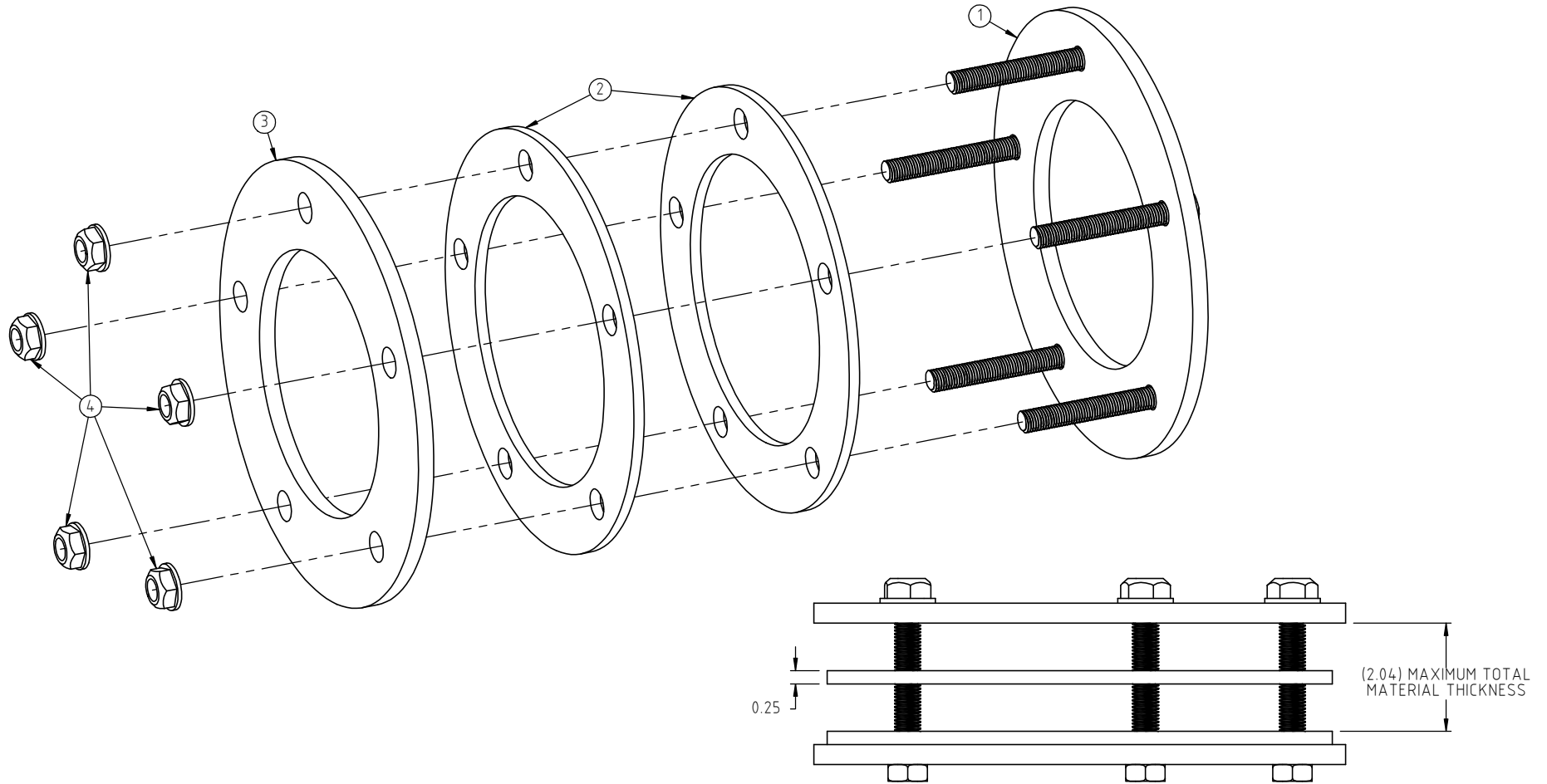
DESCRIPTION	1000 GALLON DUAL LINE™ TANK- OUTER TANK	
SCALE	N.S.	PART NO. DW1000-77-2

© DEN HARTOG INDUSTRIES, INC.

Copyright. All information furnished within this document, electronic file or design correspondence is the property of Den Hartog Industries, Inc. and shall not be used, disclosed to others or copied without the expressed written consent of Den Hartog Industries, Inc.

KEY	PART NUMBER	DESCRIPTION	QTY.
1	19564	2" FITTING RING WELDMENT	1
2	19555	2" FITTING GASKET	2
3	19566	2" FITTING RING	1
4	19568	NUT, 1/2" SS	5

19563



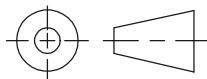
				DRAWN / DATE ADH 9/26/14	MATERIAL SEE COMPONENTS
				APPROD. / DATE REH 10/29/14	
REV	DESCRIPTION	BY / DATE	CCN	SHOT WEIGHT:	NOTES: 1.) PATENT PENDING
				SHIPPING WEIGHT:	
				FINISH: NONE	



4010 HOSPERS DRIVE S. BOX 425, HOSPERS, IOWA 51238-0425

DESCRIPTION 2" DUAL LINE™ TANK FITTING RING ASSEMBLY	
SCALE N.S.	PART NO. 19563

THIRD ANGLE PROJECTION
ANSI 14.5M



ALL DIMENSIONS ARE IN DECIMAL INCHES
TOLERANCES UNLESS OTHERWISE SPECIFIED

POLYETHYLENE
±1% @ 68°F

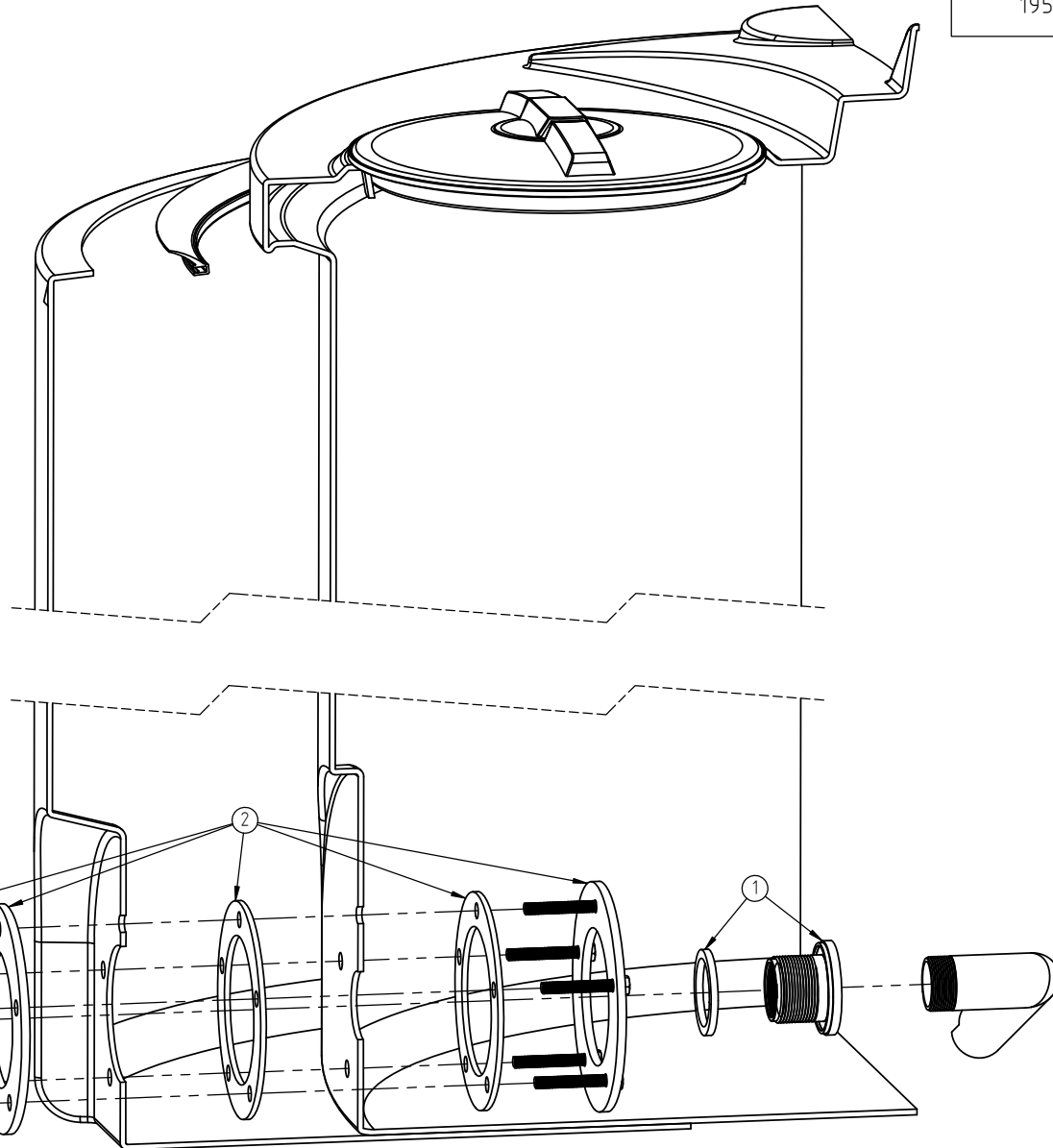
METAL
DECIMAL ± .125"
FRACTION ± 1/4"
ANGLE ± 1°

© DEN HARTOG INDUSTRIES, INC.

Copyright. All information furnished within this document, electronic file or design correspondence is the property of Den Hartog Industries, Inc. and shall not be used, disclosed to others or copied without the expressed written consent of Den Hartog Industries, Inc.

19563 INSTALL

KEY	PART NUMBER	DESCRIPTION	QTY.
1	10508	BULKHEAD, 2" FITTING	1
2	19563	2" DOUBLE WALL RING ASSEMBLY	1
3	10488		1



				DRAWN / DATE ADH 10/16/13	MATERIAL
				APPRD. / DATE REH 10/29/14	
REV	DESCRIPTION	BY / DATE	CCN	SHOT WEIGHT:	NOTES:
				SHIPPING WEIGHT:	1) PATENT PENDING
				FINISH:	
ALL DIMENSIONS ARE IN DECIMAL INCHES TOLERANCES UNLESS OTHERWISE SPECIFIED		THIRD ANGLE PROJECTION ANSI 14.5M			
POLYETHYLENE ±1% @ 68°F					
METAL DECIMAL ± .125" FRACTION ± 1/4" ANGLE ± 1°					



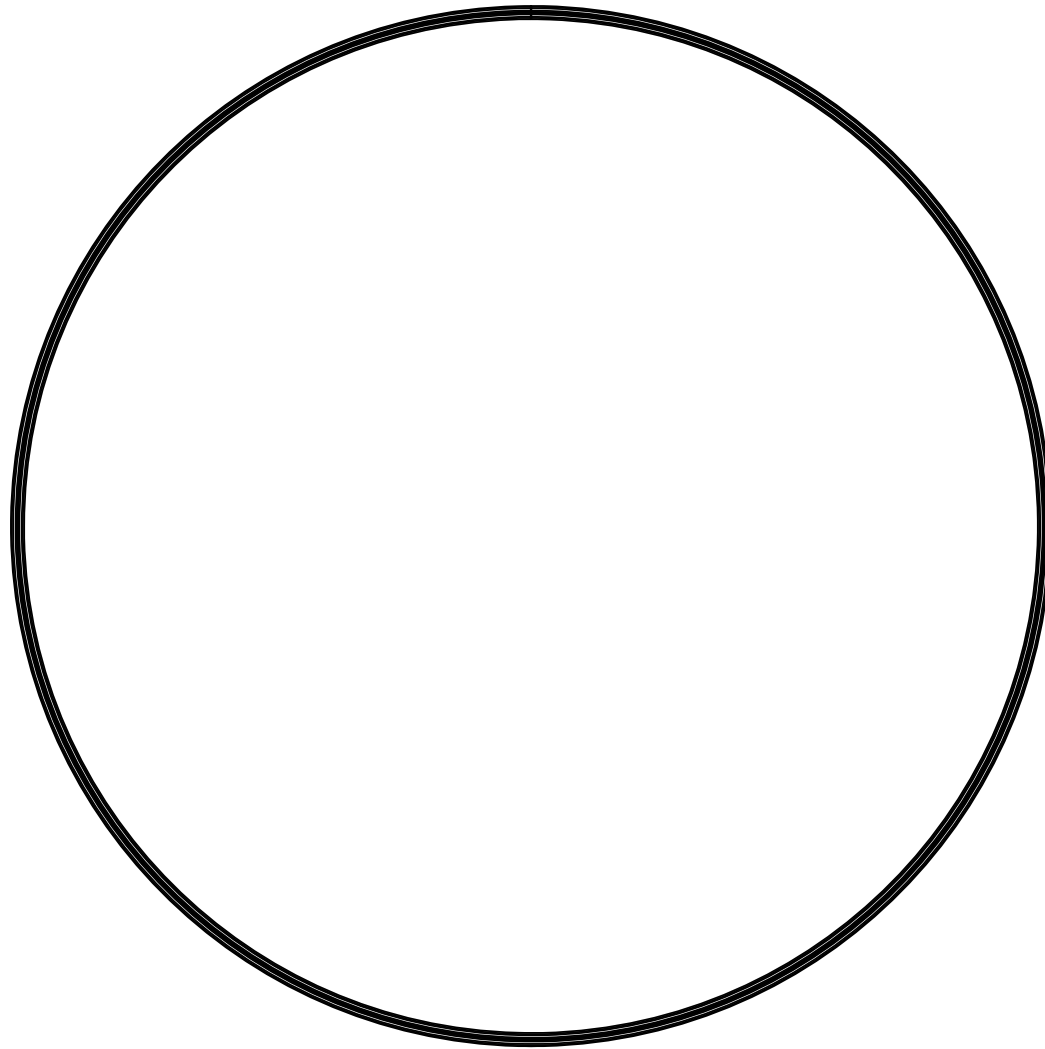
4010 HOSPERS DRIVE S. BOX 425, HOSPERS, IOWA 51238-0425


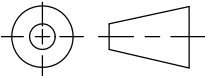
DESCRIPTION	OPTIONAL 2" FITTING ASSEMBLY INSTALLATION	
SCALE	N.S.	PART NO. 19563 INSTALL

© DEN HARTOG INDUSTRIES, INC.

Copyright. All information furnished within this document, electronic file or design correspondence is the property of Den Hartog industries, Inc. and shall not be used, disclosed to others or copied without the expressed written consent of Den Hartog Industries, Inc.

14214



				DRAWN / DATE ADH 7/14/14	MATERIAL		4010 HOSPERS DRIVE S. BOX 425, HOSPERS, IOWA 51238-0425
				APPRD. / DATE REH 10/30/14	EPDM		
REV	DESCRIPTION	BY / DATE	CCN				
ALL DIMENSIONS ARE IN DECIMAL INCHES TOLERANCES UNLESS OTHERWISE SPECIFIED		THIRD ANGLE PROJECTION ANSI 14.5M		SHOT WEIGHT:	NOTES:	DESCRIPTION	
POLYETHYLENE ±1% @ 68°F				SHIPPING WEIGHT:	1.) PURCHASED 2.) 210.50 IN LENGTH 3.) PATENT PENDING	SCALE	
METAL DECIMAL ± .125" FRACTION ± 1/4" ANGLE ± 1°				FINISH:		PART NO.	14214
						N.S.	77 INCH DIAMETER DUAL LINE™ TANK- GASKET