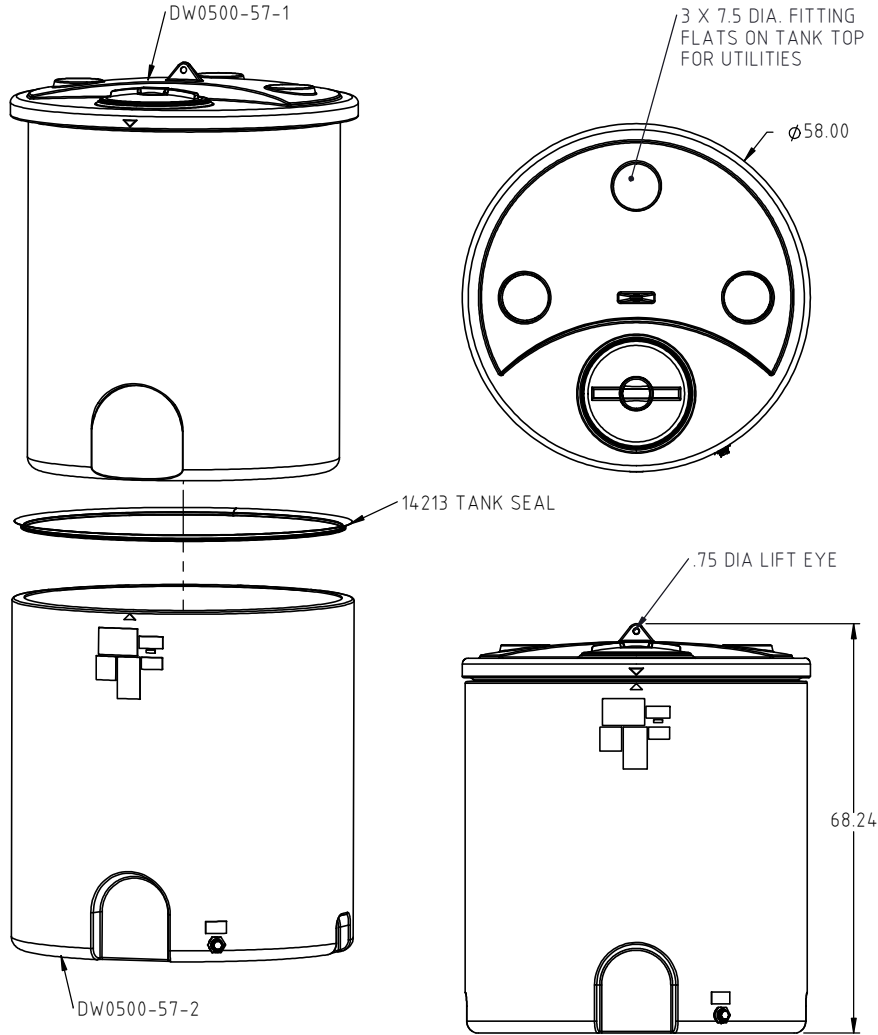


© DEN HARTOG INDUSTRIES, INC.

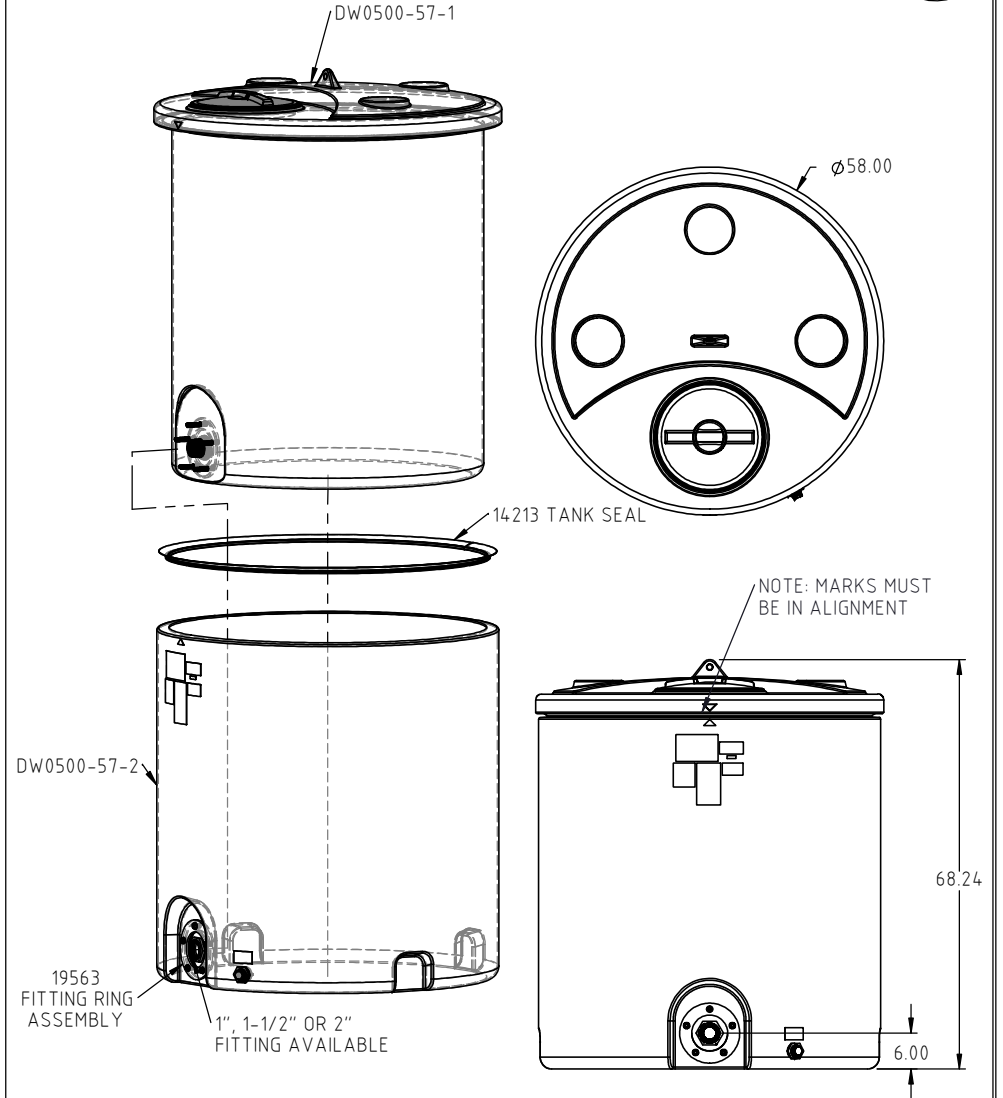
Copyright. All information furnished within this document, electronic file or design correspondence is the property of Den Hartog Industries, Inc. and shall not be used, disclosed to others or copied without the expressed written consent of Den Hartog Industries, Inc.

STANDARD TANK ASSEMBLY



TANK ASSEMBLY WITH OPTIONAL 2" FITTING

DW0500-57



REV	DESCRIPTION	BY / DATE	CCN	DRAWN / DATE ADH 7/14/14	MATERIAL SEE NOTE 1
				APPRO. / DATE REH 10/16/14	
	ALL DIMENSIONS ARE IN DECIMAL INCHES TOLERANCES UNLESS OTHERWISE SPECIFIED	THIRD ANGLE PROJECTION ANSI 14.5M	SHOT WEIGHT:	NOTES: 1.) REFERENCE COMPONENT PRINTS FOR DETAILS 2.) PATENT PENDING	
	POLYETHYLENE ±1% @ 68°F		SHIPPING WEIGHT: STANDARD =264 LBS.		
	METAL DECIMAL ± .125" FRACTION ± 1/4" ANGLE ± 1°		FINISH:		

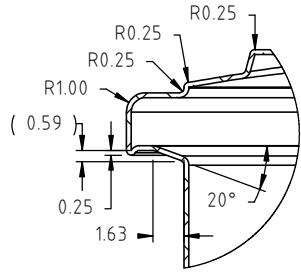
**Heritage Products** (866) 839-1866

Sales@heritagepro.com

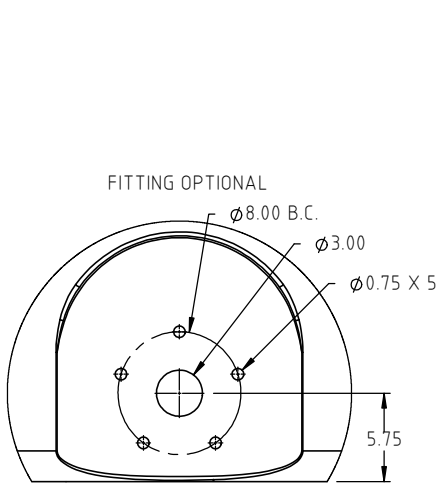
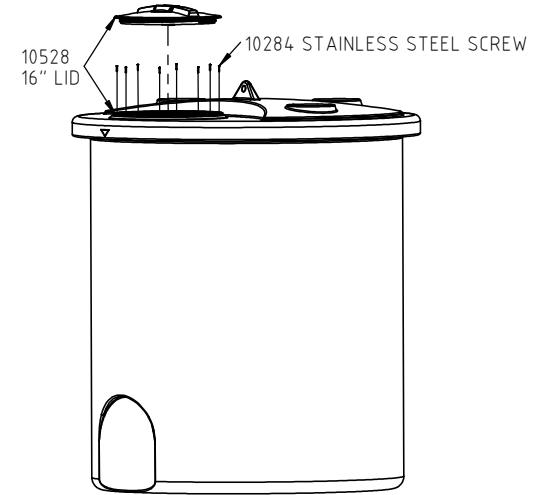
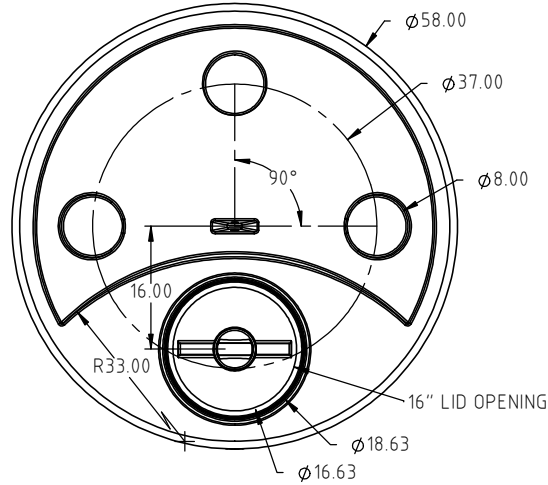
4010 HOSPERS DRIVE S. BOX 425, HOSPERS, IOWA 51238-0425

DESCRIPTION 500 GALLON DUAL LINE™ TANK ASSEMBLY	
SCALE N.S.	PART NO. DW0500-57

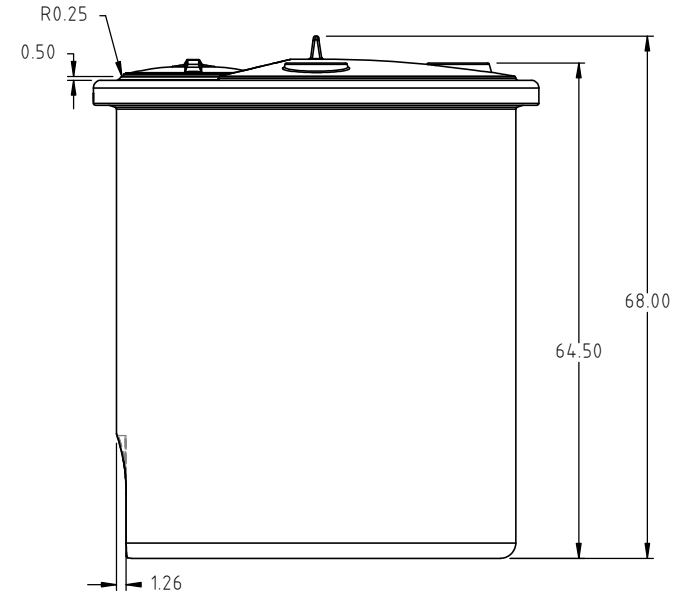
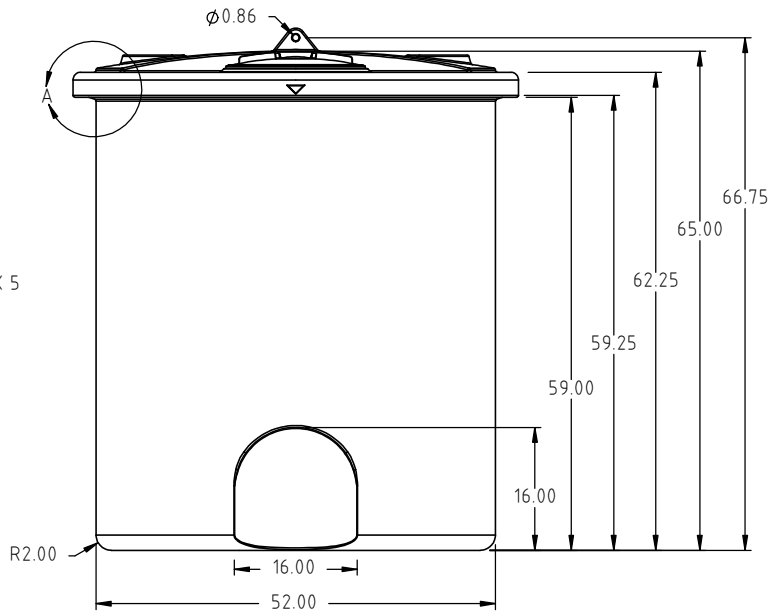
Copyright. All information furnished within this document, electronic file or design correspondence is the property of Den Hartog Industries, Inc. and shall not be used, disclosed to others or copied without the expressed written consent of Den Hartog Industries, Inc.



DETAIL A  
SCALE 1:10



DETAIL B  
SCALE 2:25



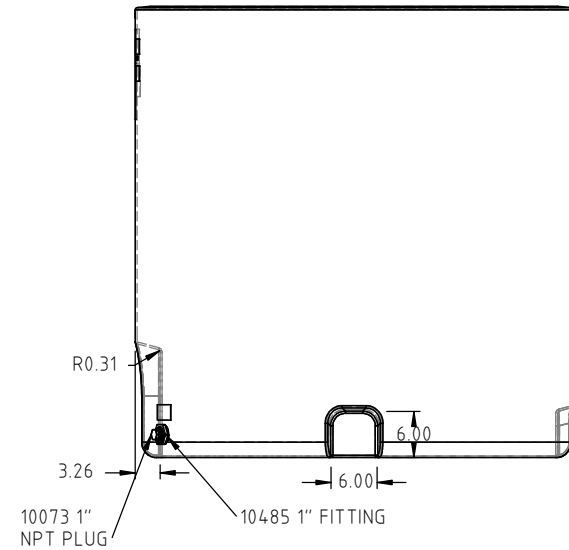
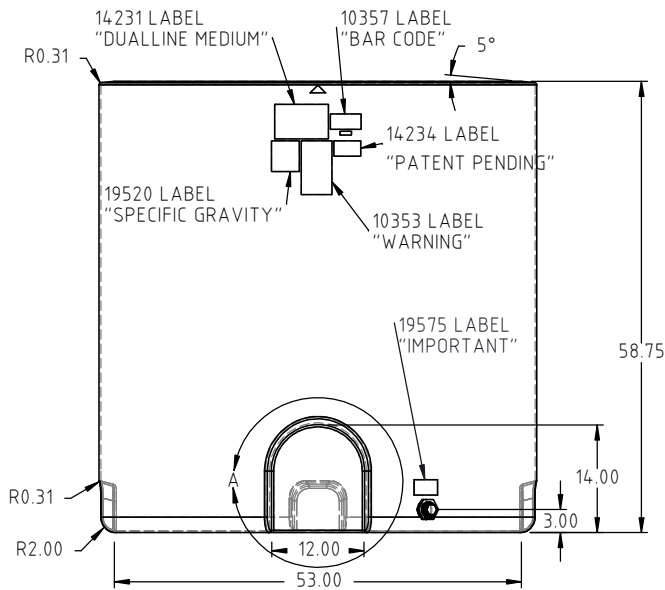
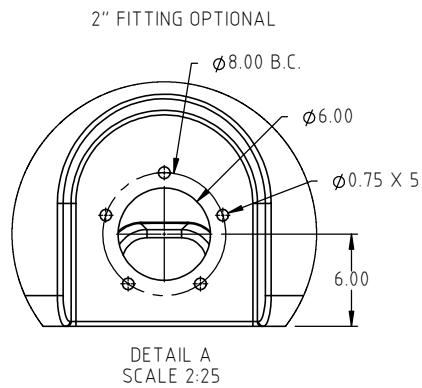
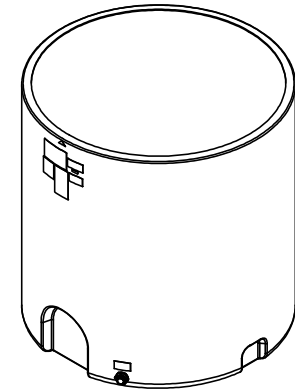
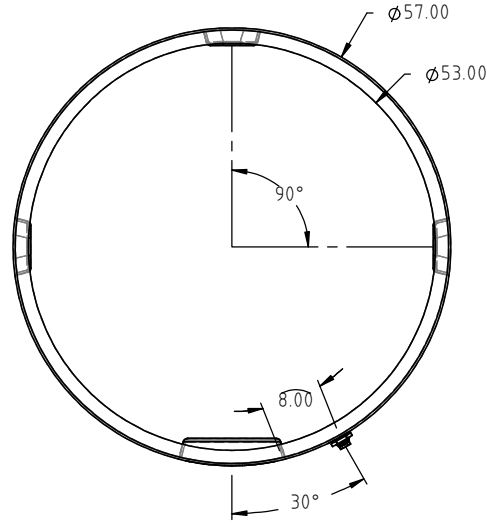
REV	DESCRIPTION	BY / DATE	CCN	DRAWN / DATE ADH 2/19/14	MATERIAL 10420
				APPROD. / DATE REH 6/1/14	
				SHOT WEIGHT: 130 LBS.	NOTES: 1.) 0.250 NOM. WALL THICKNESS 2.) PATENT PENDING
				SHIPPING WEIGHT:	
				FINISH:	
ALL DIMENSIONS ARE IN DECIMAL INCHES TOLERANCES UNLESS OTHERWISE SPECIFIED		THIRD ANGLE PROJECTION ANSI 14.5M			
POLYETHYLENE		METAL DECIMAL ± .125" FRACTION ± 1/4" ANGLE ± 1°			
±1% @ 68°F					



4010 HOSPERS DRIVE S. BOX 425, HOSPERS, IOWA 51238-0425

DESCRIPTION 500 GALLON DUAL LINE™ TANK-INNER TANK	
SCALE N.S.	PART NO. DW0500-57-1

Copyright. All information furnished within this document, electronic file or design correspondence is the property of Den Hartog Industries, Inc. and shall not be used, disclosed to others or copied without the expressed written consent of Den Hartog Industries, Inc.



DRAWN / DATE ADH 10/16/12		MATERIAL 10420	
APPRO. / DATE REH 6/1/14		NOTES: 1.) 0.240 NOM. WALL THICKNESS 2.) PATENT PENDING	
REV	DESCRIPTION	BY / DATE	CCN
ALL DIMENSIONS ARE IN DECIMAL INCHES TOLERANCES UNLESS OTHERWISE SPECIFIED		THIRD ANGLE PROJECTION ANSI 14.5M	
POLYETHYLENE ±1% @ 68°F		METAL DECIMAL ± .125" FRACTION ± 1/4" ANGLE ± 1°	
SHOT WEIGHT: 127 LBS.		SHIPPING WEIGHT: 109 LBS.	
FINISH:			

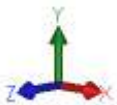
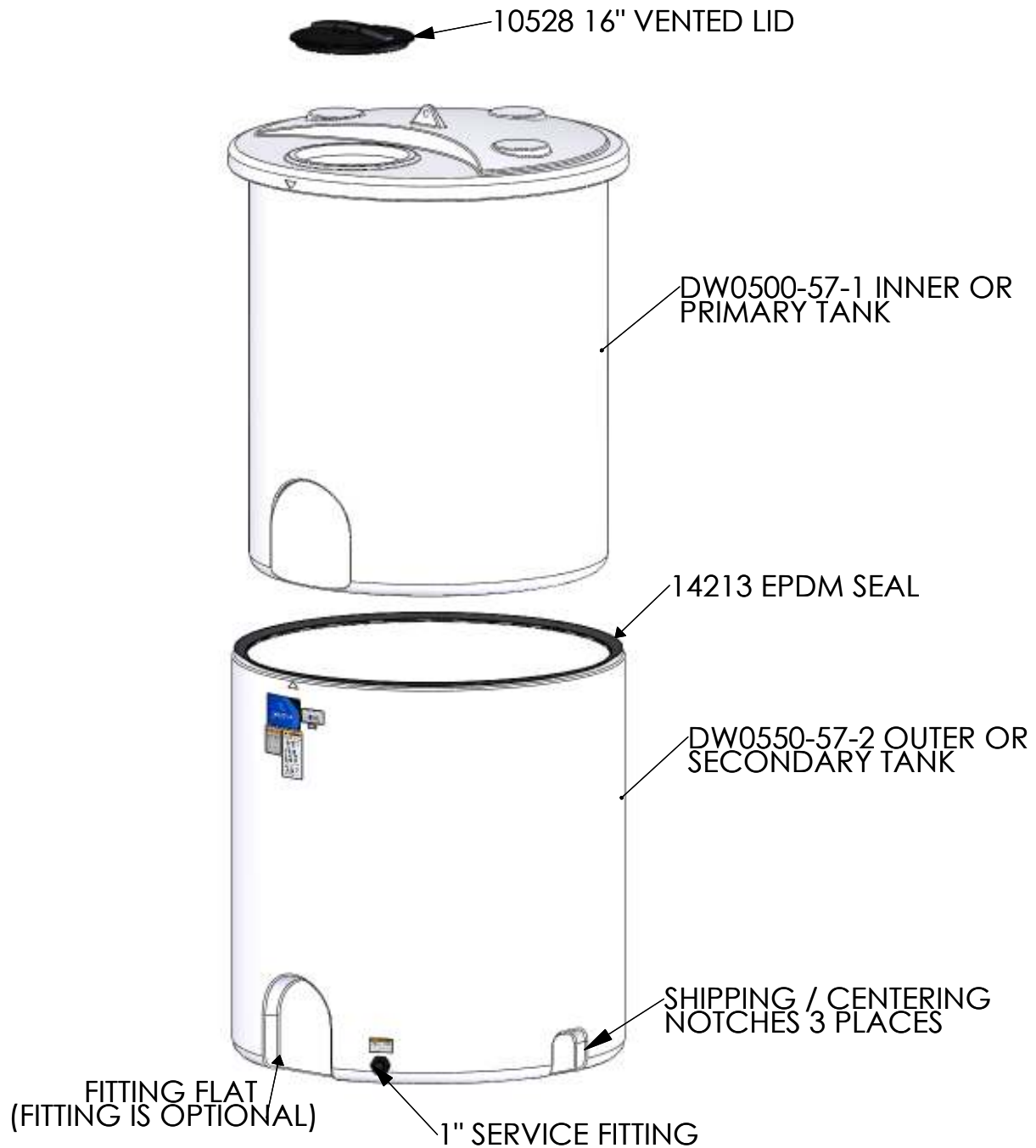


4010 HOSPERS DRIVE S. BOX 425, HOSPERS, IOWA 51238-0425

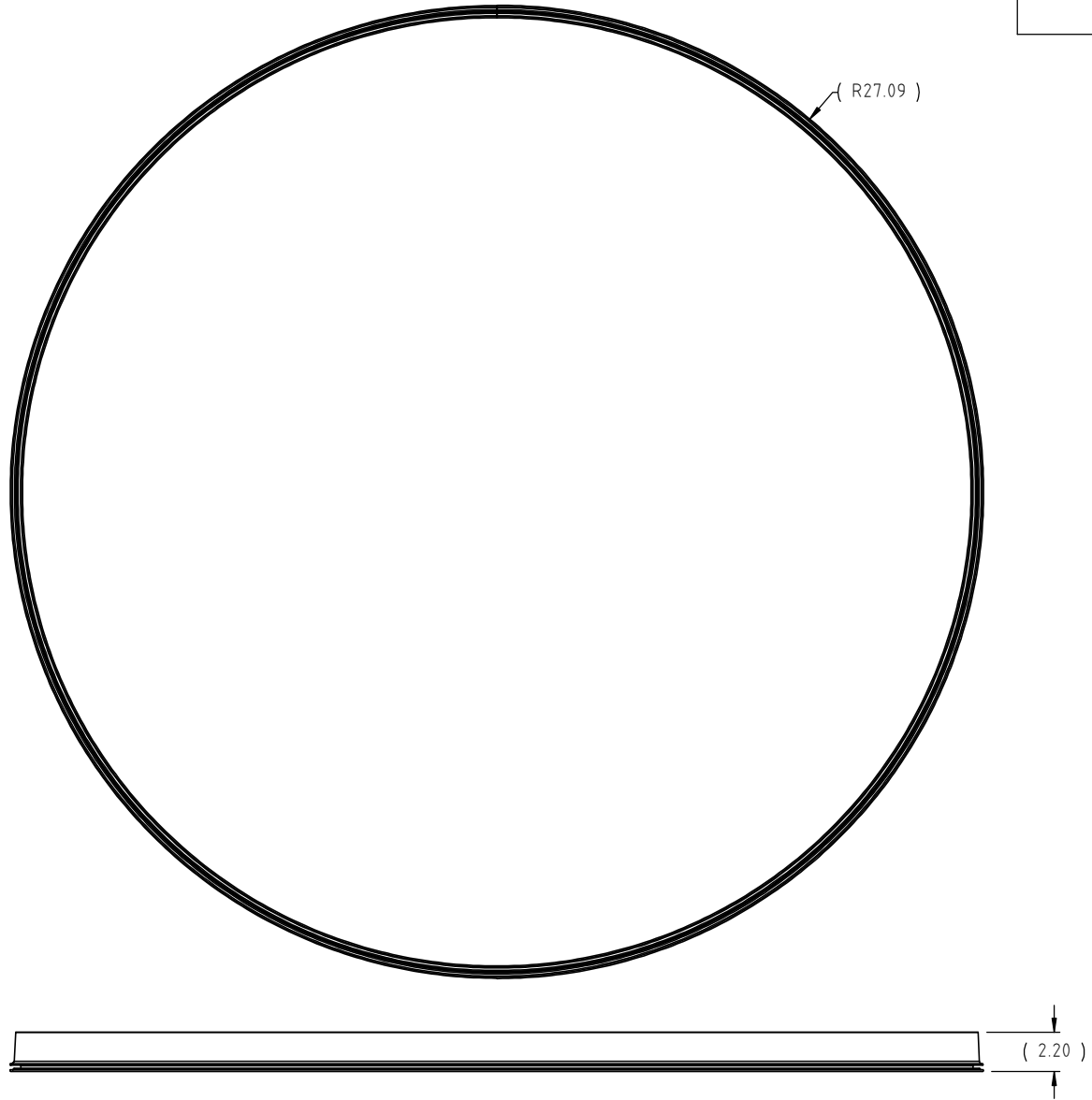
DESCRIPTION 500 GALLON DUAL LINE™ TANK- OUTER TANK	
SCALE N.S.	PART NO. DW0500-57-2

# DW0500-57 DOUBLE WALL TANK

## STANDARD COMPONENTS

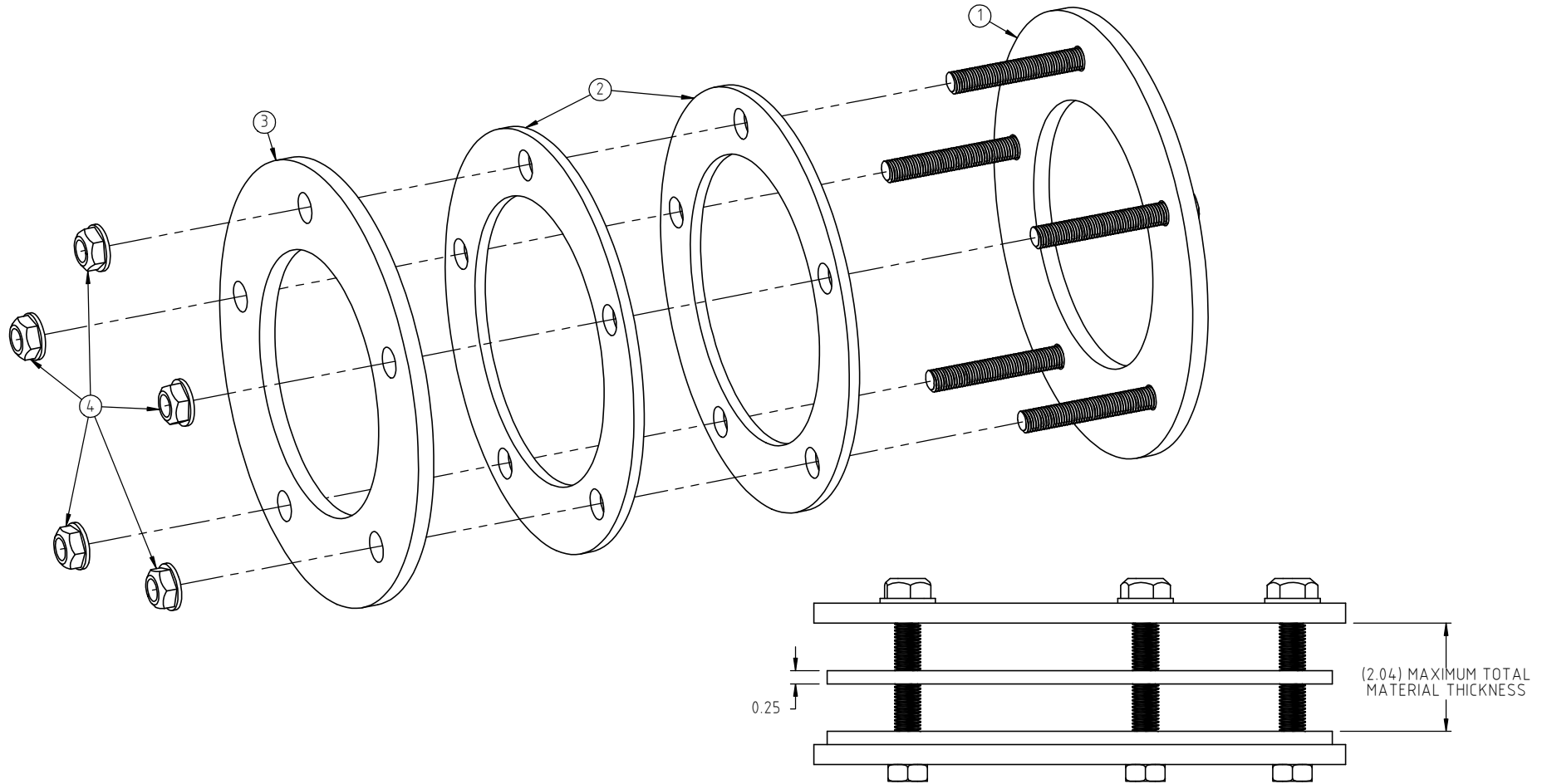


Copyright. All information furnished within this document, electronic file or design correspondence is the property of Den Hartog industries, Inc. and shall not be used, disclosed to others or copied without the expressed written consent of Den Hartog Industries, Inc.




				DRAWN / DATE ADH 7/14/14	MATERIAL EPDM	
				APPROD. / DATE REH 10/30/14		
REV	DESCRIPTION	BY / DATE	CCN			
ALL DIMENSIONS ARE IN DECIMAL INCHES TOLERANCES UNLESS OTHERWISE SPECIFIED POLYETHYLENE		THIRD ANGLE PROJECTION ANSI 14.5M 		SHOT WEIGHT:	NOTES:	4010 HOSPERS DRIVE S. BOX 425, HOSPERS, IOWA 51238-0425
METAL DECIMAL ± .125" FRACTION ± 1/4" ANGLE ± 1°				SHIPPING WEIGHT:	1.) PURCHASED	DESCRIPTION 57 INCH DIAMETER DOUBLE WALL TANK- GASKET
±1% @ 68°F				FINISH:	2.) 166.50 IN LENGTH	SCALE N.S.
						PART NO. 14213

KEY	PART NUMBER	DESCRIPTION	QTY.
1	19564	2" FITTING RING WELDMENT	1
2	19555	2" FITTING GASKET	2
3	19566	2" FITTING RING	1
4	19568	NUT, 1/2" SS	5



				DRAWN / DATE ADH 9/26/14	MATERIAL SEE COMPONENTS
				APPROD. / DATE REH 10/29/14	
REV	DESCRIPTION	BY / DATE	CCN	SHOT WEIGHT:	NOTES: 1.) PATENT PENDING
				SHIPPING WEIGHT:	
				FINISH: NONE	



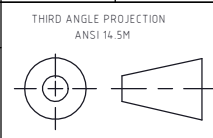
4010 HOSPERS DRIVE S. BOX 425, HOSPERS, IOWA 51238-0425

DESCRIPTION <b>2" DUAL LINE™ TANK FITTING RING ASSEMBLY</b>	
SCALE N.S.	PART NO. 19563

ALL DIMENSIONS ARE IN DECIMAL INCHES  
TOLERANCES UNLESS OTHERWISE SPECIFIED

**POLYETHYLENE**  
±1% @ 68°F

**METAL**  
DECIMAL ± .125"  
FRACTION ± 1/4"  
ANGLE ± 1°

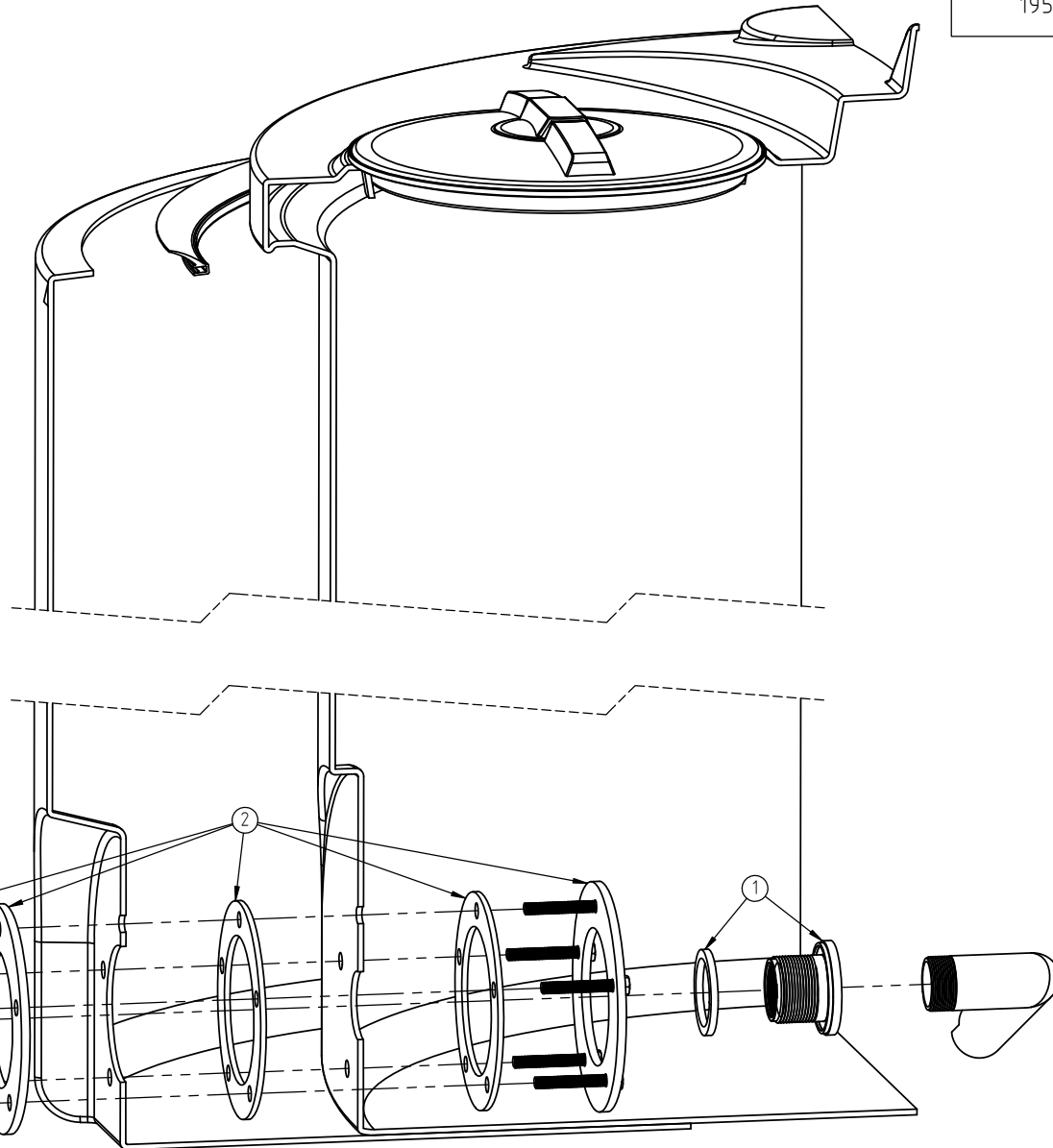


© DEN HARTOG INDUSTRIES, INC.

Copyright. All information furnished within this document, electronic file or design correspondence is the property of Den Hartog Industries, Inc. and shall not be used, disclosed to others or copied without the expressed written consent of Den Hartog Industries, Inc.

19563 INSTALL

KEY	PART NUMBER	DESCRIPTION	QTY.
1	10508	BULKHEAD, 2" FITTING	1
2	19563	2" DOUBLE WALL RING ASSEMBLY	1
3	10488		1



				DRAWN / DATE ADH 10/16/13	MATERIAL
				APPRD. / DATE REH 10/29/14	
REV	DESCRIPTION	BY / DATE	CCN	SHOT WEIGHT:	NOTES:
				SHIPPING WEIGHT:	1) PATENT PENDING
				FINISH:	
ALL DIMENSIONS ARE IN DECIMAL INCHES TOLERANCES UNLESS OTHERWISE SPECIFIED		THIRD ANGLE PROJECTION ANSI 14.5M			
POLYETHYLENE ±1% @ 68°F					
METAL DECIMAL ± .125" FRACTION ± 1/4" ANGLE ± 1°					



4010 HOSPERS DRIVE S. BOX 425, HOSPERS, IOWA 51238-0425

DESCRIPTION  
OPTIONAL 2" FITTING ASSEMBLY INSTALLATION

SCALE  
N.S.

PART NO.  
19563 INSTALL